



# Title Plan - LT 563777

---

**Survey Number** LT 563777  
**Surveyor Reference** 437433 Stage 4A, 4B & 5 Prevelles  
**Surveyor** Darren James Hocken  
**Survey Firm** Eliot Sinclair & Partners Ltd  
**Surveyor Declaration** I Darren James Hocken, being a licensed cadastral surveyor, certify that:  
(a) this dataset provided by me and its related survey are accurate, correct and in accordance with the Cadastral Survey Act 2002 and the Rules for Cadastral Survey 2010, and  
(b) the survey was undertaken by me or under my personal direction.  
Declared on 17 Dec 2021 05:45 PM

---

## Survey Details

**Dataset Description** Lots 31-96, 130, 135, 137, 139, 142, 143, 145 and 200 Being Subdivision of Lot 152 DP 556577  
**Status** Approved as to Survey  
**Land District** Canterbury **Survey Class** Class A  
**Submitted Date** 17/12/2021 **Survey Approval Date** 08/02/2022  
**Deposit Date**

---

## Territorial Authorities

Selwyn District

---

## Comprised In

RT 977642

---

## Created Parcels

Parcels	Parcel Intent	Area	RT Reference
Lot 31 Deposited Plan 563777	Fee Simple Title	0.0691 Ha	1014928
Lot 32 Deposited Plan 563777	Fee Simple Title	0.0697 Ha	1014929
Lot 33 Deposited Plan 563777	Fee Simple Title	0.0709 Ha	1014930
Lot 34 Deposited Plan 563777	Fee Simple Title	0.0700 Ha	1014931
Lot 35 Deposited Plan 563777	Fee Simple Title	0.0699 Ha	1014932
Lot 36 Deposited Plan 563777	Fee Simple Title	0.0787 Ha	1014933
Lot 37 Deposited Plan 563777	Fee Simple Title	0.0749 Ha	1014934
Lot 38 Deposited Plan 563777	Fee Simple Title	0.0701 Ha	1014935
Lot 39 Deposited Plan 563777	Fee Simple Title	0.0698 Ha	1014936
Lot 40 Deposited Plan 563777	Fee Simple Title	0.0699 Ha	1014937
Lot 41 Deposited Plan 563777	Fee Simple Title	0.0699 Ha	1014938
Lot 42 Deposited Plan 563777	Fee Simple Title	0.0699 Ha	1014939
Lot 43 Deposited Plan 563777	Fee Simple Title	0.0699 Ha	1014940
Lot 44 Deposited Plan 563777	Fee Simple Title	0.0706 Ha	1014941
Lot 45 Deposited Plan 563777	Fee Simple Title	0.0795 Ha	1014942
Lot 46 Deposited Plan 563777	Fee Simple Title	0.0704 Ha	1014943
Lot 47 Deposited Plan 563777	Fee Simple Title	0.1121 Ha	1014944
Lot 48 Deposited Plan 563777	Fee Simple Title	0.1000 Ha	1014945
Lot 49 Deposited Plan 563777	Fee Simple Title	0.1000 Ha	1014946
Lot 50 Deposited Plan 563777	Fee Simple Title	0.1000 Ha	1014947

# Title Plan - LT 563777

---

## Created Parcels

Parcels	Parcel Intent	Area	RT Reference
Lot 51 Deposited Plan 563777	Fee Simple Title	0.1000 Ha	1014948
Lot 52 Deposited Plan 563777	Fee Simple Title	0.1103 Ha	1014949
Lot 53 Deposited Plan 563777	Fee Simple Title	0.0700 Ha	1014950
Lot 54 Deposited Plan 563777	Fee Simple Title	0.0700 Ha	1014951
Lot 55 Deposited Plan 563777	Fee Simple Title	0.0650 Ha	1014952
Lot 56 Deposited Plan 563777	Fee Simple Title	0.0650 Ha	1014953
Lot 57 Deposited Plan 563777	Fee Simple Title	0.0700 Ha	1014954
Lot 58 Deposited Plan 563777	Fee Simple Title	0.0700 Ha	1014955
Lot 59 Deposited Plan 563777	Fee Simple Title	0.0700 Ha	1014956
Lot 60 Deposited Plan 563777	Fee Simple Title	0.0691 Ha	1014957
Lot 61 Deposited Plan 563777	Fee Simple Title	0.0650 Ha	1014958
Lot 62 Deposited Plan 563777	Fee Simple Title	0.0600 Ha	1014959
Lot 63 Deposited Plan 563777	Fee Simple Title	0.0625 Ha	1014960
Lot 64 Deposited Plan 563777	Fee Simple Title	0.0625 Ha	1014961
Lot 65 Deposited Plan 563777	Fee Simple Title	0.0626 Ha	1014962
Lot 66 Deposited Plan 563777	Fee Simple Title	0.0660 Ha	1014963
Lot 67 Deposited Plan 563777	Fee Simple Title	0.0650 Ha	1014964
Lot 68 Deposited Plan 563777	Fee Simple Title	0.0678 Ha	1014965
Lot 69 Deposited Plan 563777	Fee Simple Title	0.0651 Ha	1014966
Lot 70 Deposited Plan 563777	Fee Simple Title	0.0651 Ha	1014967
Lot 71 Deposited Plan 563777	Fee Simple Title	0.0810 Ha	1014968
Lot 72 Deposited Plan 563777	Fee Simple Title	0.0650 Ha	1014969
Lot 73 Deposited Plan 563777	Fee Simple Title	0.0650 Ha	1014970
Lot 74 Deposited Plan 563777	Fee Simple Title	0.0650 Ha	1014971
Lot 75 Deposited Plan 563777	Fee Simple Title	0.0856 Ha	1014972
Lot 76 Deposited Plan 563777	Fee Simple Title	0.0600 Ha	1014973
Lot 77 Deposited Plan 563777	Fee Simple Title	0.0651 Ha	1014974
Lot 78 Deposited Plan 563777	Fee Simple Title	0.0702 Ha	1014975
Lot 79 Deposited Plan 563777	Fee Simple Title	0.0643 Ha	1014976
Lot 80 Deposited Plan 563777	Fee Simple Title	0.0642 Ha	1014977
Lot 81 Deposited Plan 563777	Fee Simple Title	0.0701 Ha	1014978
Lot 82 Deposited Plan 563777	Fee Simple Title	0.0701 Ha	1014979
Lot 83 Deposited Plan 563777	Fee Simple Title	0.0702 Ha	1014980
Lot 84 Deposited Plan 563777	Fee Simple Title	0.0500 Ha	1014981
Lot 85 Deposited Plan 563777	Fee Simple Title	0.0500 Ha	1014982
Lot 86 Deposited Plan 563777	Fee Simple Title	0.0500 Ha	1014983
Lot 87 Deposited Plan 563777	Fee Simple Title	0.0625 Ha	1014984
Lot 88 Deposited Plan 563777	Fee Simple Title	0.0600 Ha	1014985
Lot 89 Deposited Plan 563777	Fee Simple Title	0.0600 Ha	1014986
Lot 90 Deposited Plan 563777	Fee Simple Title	0.0557 Ha	1014987
Lot 91 Deposited Plan 563777	Fee Simple Title	0.0586 Ha	1014988
Lot 92 Deposited Plan 563777	Fee Simple Title	0.0600 Ha	1014989
Lot 93 Deposited Plan 563777	Fee Simple Title	0.0701 Ha	1014990
Lot 94 Deposited Plan 563777	Fee Simple Title	0.0500 Ha	1014991

# Title Plan - LT 563777

---

## Created Parcels

Parcels	Parcel Intent	Area	RT Reference
Lot 95 Deposited Plan 563777	Fee Simple Title	0.0501 Ha	1014992
Lot 96 Deposited Plan 563777	Fee Simple Title	0.0850 Ha	1014993
Lot 130 Deposited Plan 563777	Vesting on Deposit for Recreation Reserve (Territorial Authority)	0.5396 Ha	1014994
Lot 135 Deposited Plan 563777	Vesting on Deposit for Recreation Reserve (Territorial Authority)	0.0705 Ha	1014995
Lot 137 Deposited Plan 563777	Vesting on Deposit for Local Purpose Reserve	0.0373 Ha	1014996
Lot 139 Deposited Plan 563777	Fee Simple Title	0.0007 Ha	1014997
Lot 200 Deposited Plan 563777	Vesting on Deposit for Local Purpose Reserve	0.0009 Ha	1014998
Lot 142 Deposited Plan 563777	Vesting on Deposit for Road	0.3790 Ha	1014999
Lot 143 Deposited Plan 563777	Vesting on Deposit for Road	0.6511 Ha	1015000
Lot 145 Deposited Plan 563777	Vesting on Deposit for Road	0.4237 Ha	1015001
Area D Deposited Plan 563777	Easement		
Area S Deposited Plan 563777	Covenant - Land		
Area R Deposited Plan 563777	Covenant - Land		
Area GA Deposited Plan 563777	Easement		
Area CA Deposited Plan 563777	Easement		
Area GB Deposited Plan 563777	Easement		
Area CB Deposited Plan 563777	Easement		
Area T Deposited Plan 563777	Easement		
Area U Deposited Plan 563777	Easement		
<b>Total Area</b>		<hr/> 6.7169 Ha	

# Schedule / Memorandum

Land Registration District

**Canterbury**

Survey Number

**LT 563777**

Territorial Authority (the Council)

**Selwyn District**

## Schedule of Existing Easements to be Surrendered

Last Edited: 21 Oct 2021 15:37:49

<u>Purpose</u>	<u>Shown</u>	<u>Burdened Land</u> ( <u>Servient Tenement</u> )	<u>Creating Document Reference</u>
Right of Way	Area K DP 556577, Area M DP 556577	Lot 152 DP 556577	EI 12035451.17
Right to drain water	Area K DP 556577, Area L DP 556577	Lot 152 DP 556577	EI 12035451.17

## Memorandum of Easements

Last Edited: 04 Nov 2021 14:10:25

<u>Purpose</u>	<u>Shown</u>	<u>Burdened Land</u> ( <u>Servient Tenement</u> )	<u>Benefited Land</u> ( <u>Dominant Tenement</u> )
Right of Way and Right to convey electricity, telecommunications	CA, CB	Lot 71	Lot 70
	GA, GB D	Lot 75 Lot 96	Lot 74, Lot 76 Lot 94, Lot 95
Right to convey electricity, telecommunications	T	Lot 91	Lot 92
	U	Lot 36	Lot 35
	CB	Lot 71	Lot 69
	GB	Lot 75	Lot 73

## Memorandum of Easements in Gross

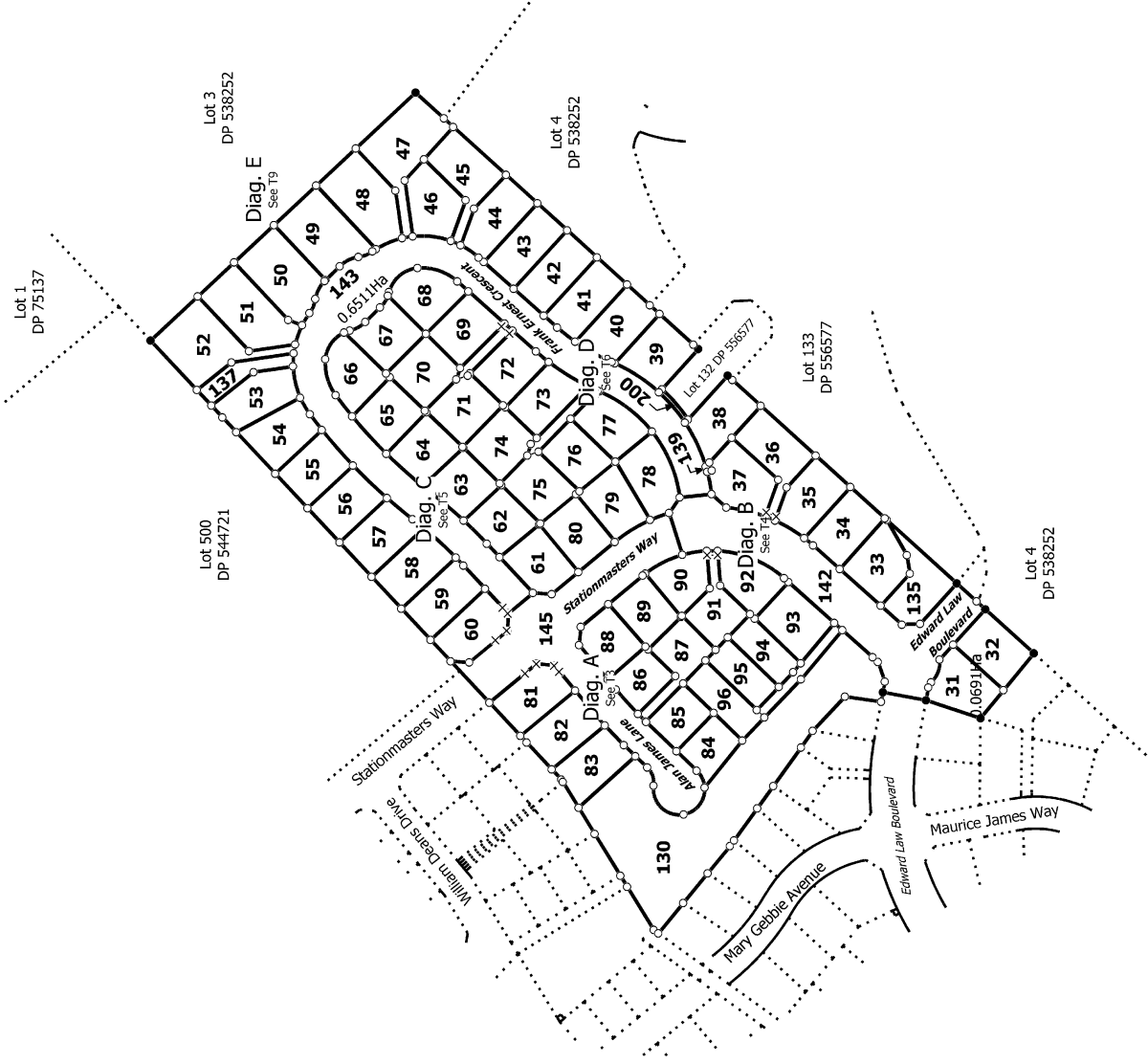
Last Edited: 17 Dec 2021 16:57:03

<u>Purpose</u>	<u>Shown</u>	<u>Burdened Land</u> ( <u>Servient Tenement</u> )	<u>Grantee</u>
Right to convey telecommunications	CA, CB	Lot 71	Enable Networks Limited
	GA, GB	Lot 75	Enable Networks Limited
	D	Lot 96	Enable Networks Limited
	T	Lot 91	Enable Networks Limited
	U	Lot 36	Enable Networks Limited
Right to drain sewage	D	Lot 96	Selwyn District Council
	GA, GB	Lot 75	Selwyn District Council

## Notes

Last Edited: 21 Oct 2021 13:33:06

- 1) Existing easements K, M, and L on DP 556577 created by document 12035451.17 are to be surrendered.
- 2) Areas R and S are subject to a land covenant for signage purposes.



T 1/11

Land District: Canterbury

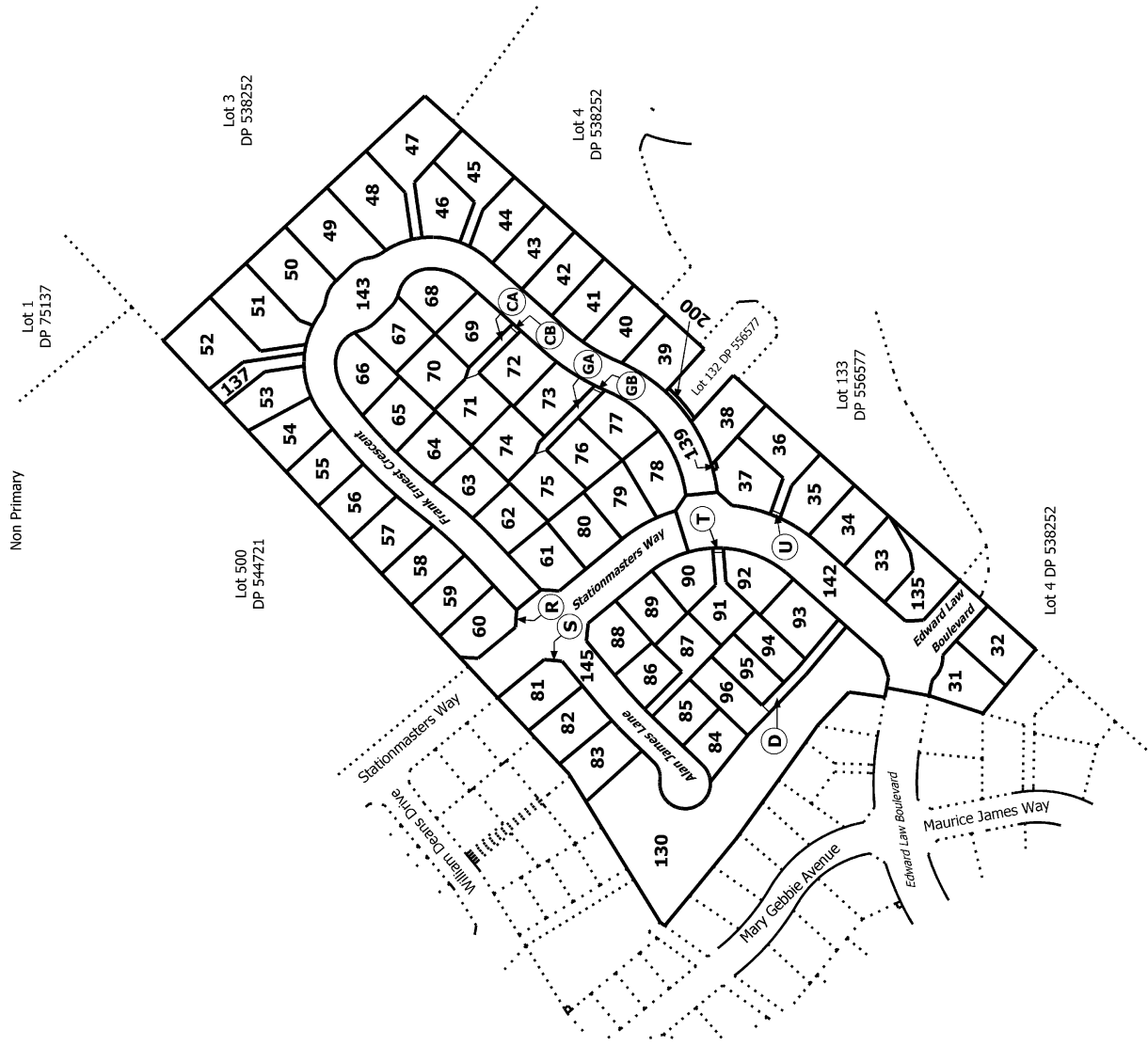
**Digitally Generated Plan**

Generated on: 08/02/2022 09:52:00 Page 5 of 15

**Lots 31-96, 130, 135, 137, 139, 142, 143, 145 and 200 Being Subdivision of Lot 152 DP 556577**

Surveyor: Darren James Hocken  
Firm: Eliot Sinclair & Partners Ltd

**Title Plan**  
**LT 563777**  
Approved on: 8/02/2022



T 2/11

Title Plan  
LT 563777  
Approved on: 8/02/2022

Surveyor: Darren James Hocken  
Firm: Eliot Sinclair & Partners Ltd

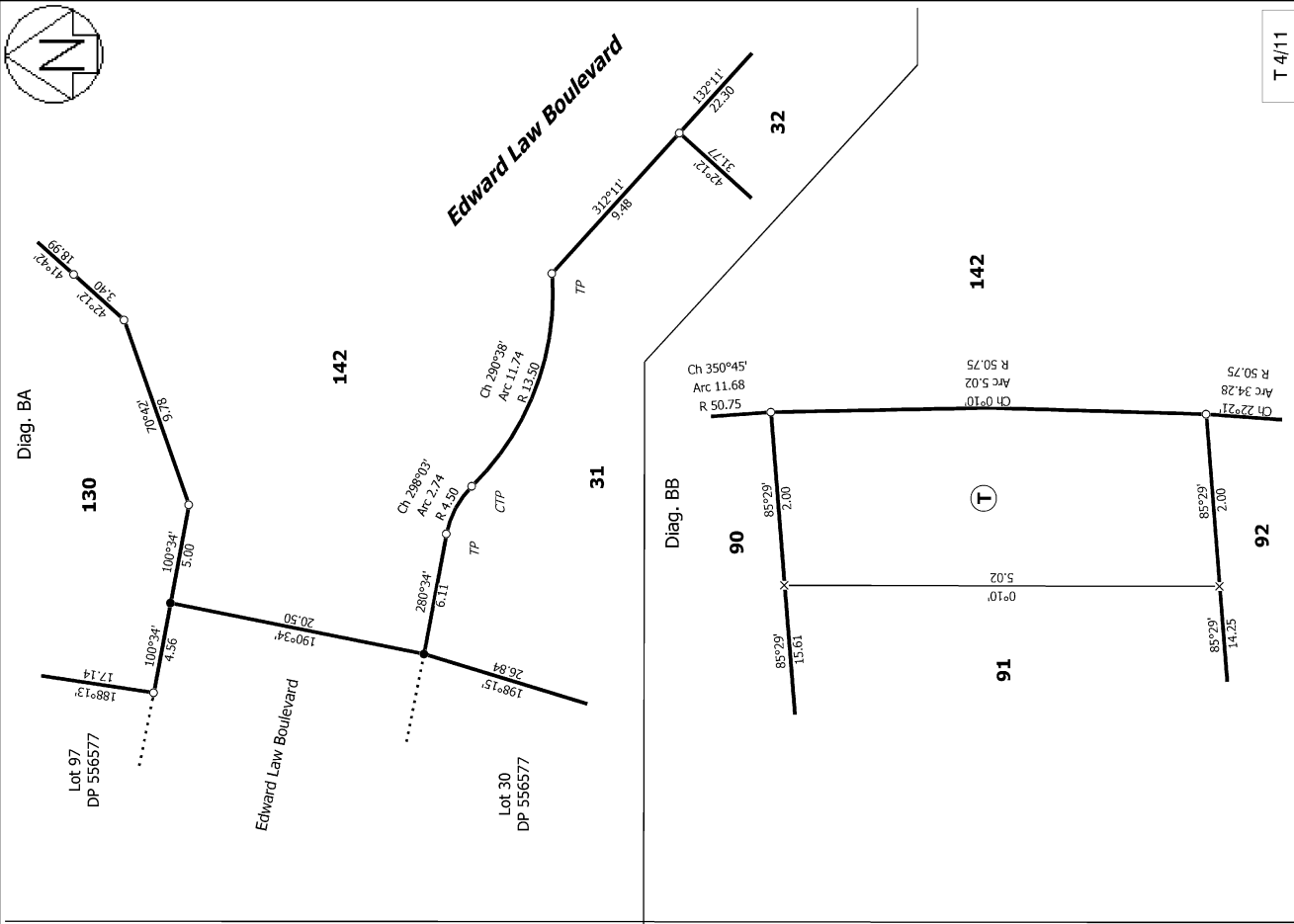
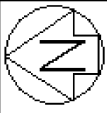
Lots 31-96, 130, 135, 137, 139, 142, 143, 145 and 200 Being Subdivision of Lot  
152 DP 556577

Land District: Canterbury

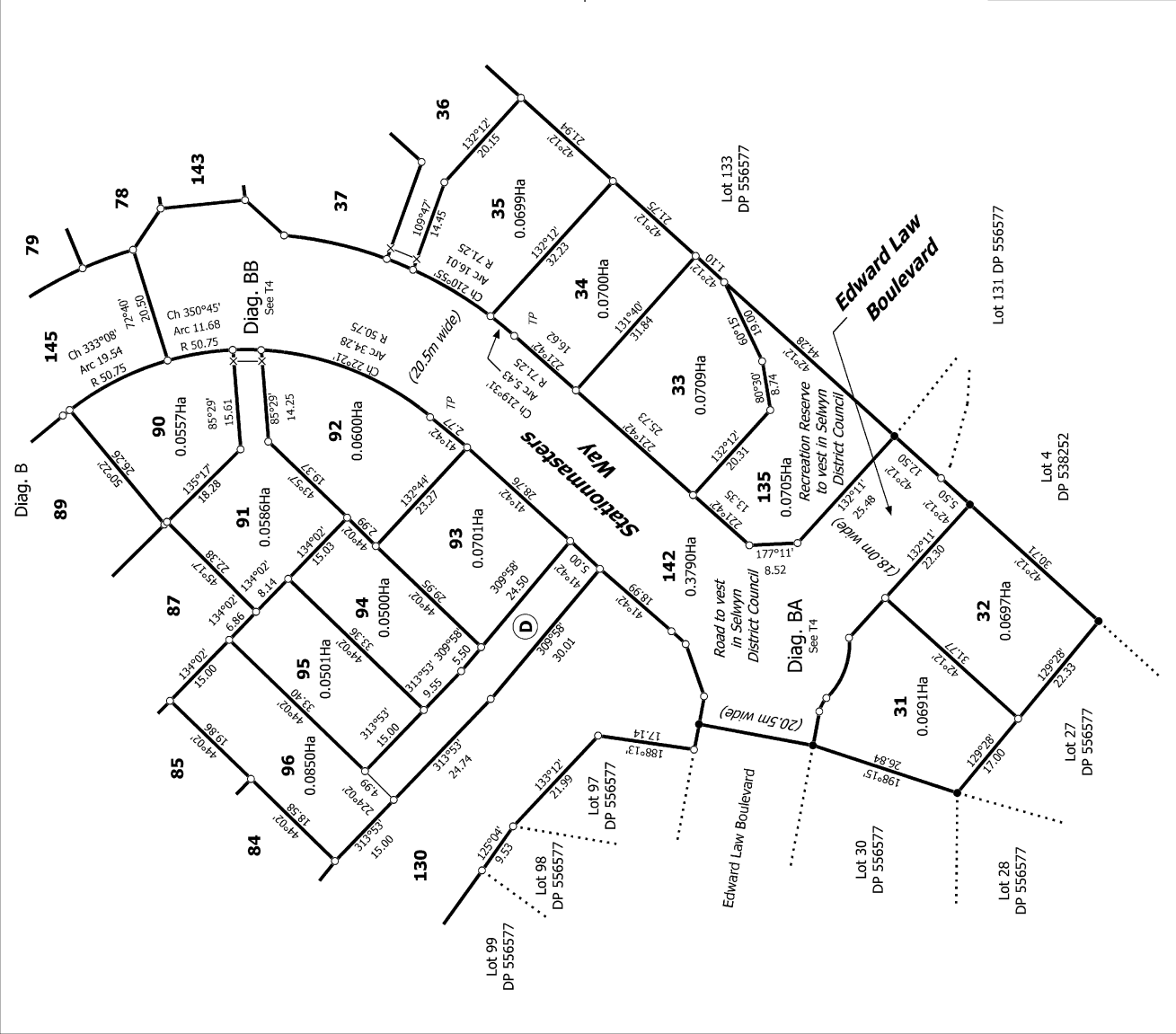
**Digitally Generated Plan**

Generated on: 08/02/2022 09:52:00 Page 6 of 15





T 4/11



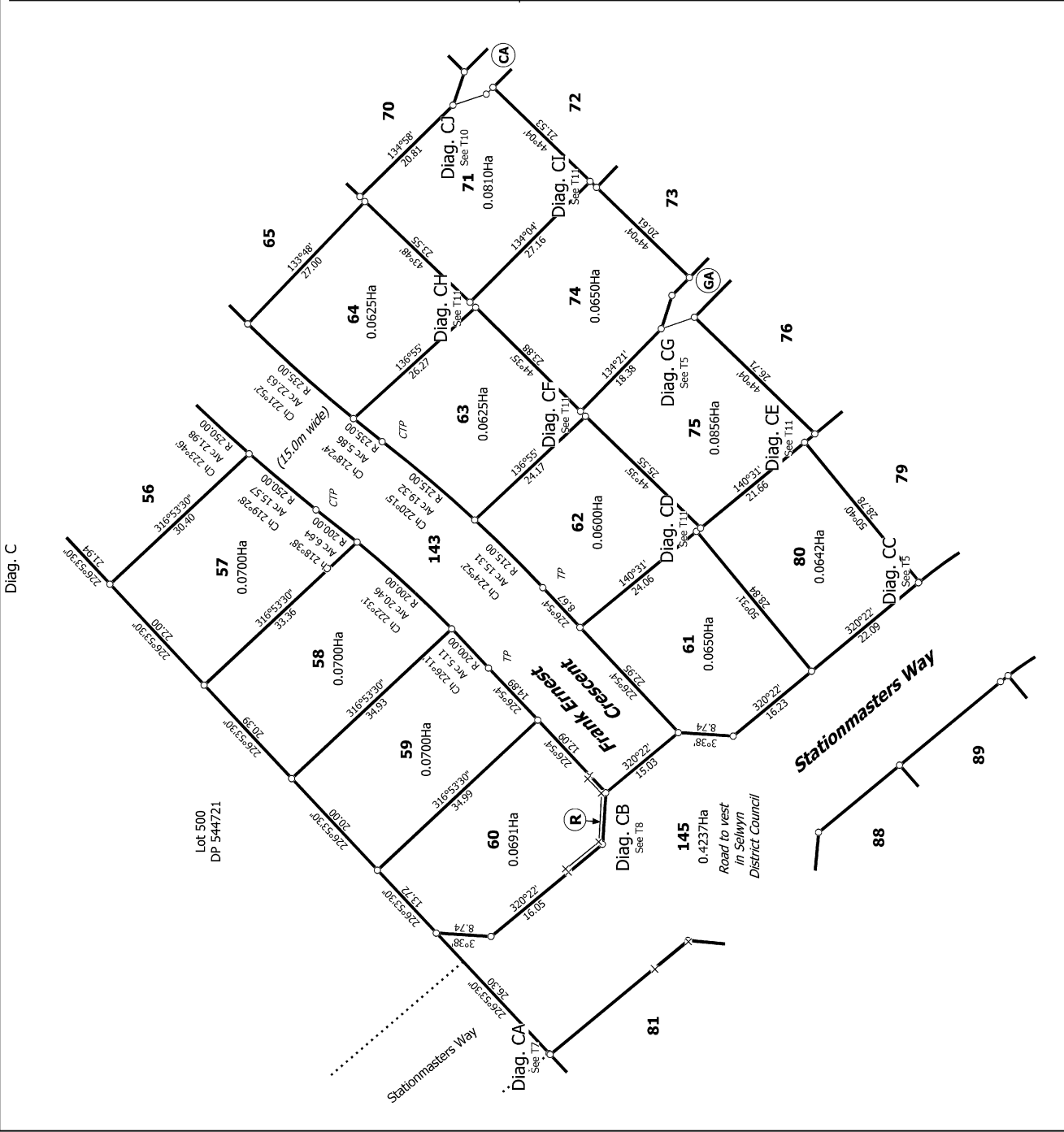
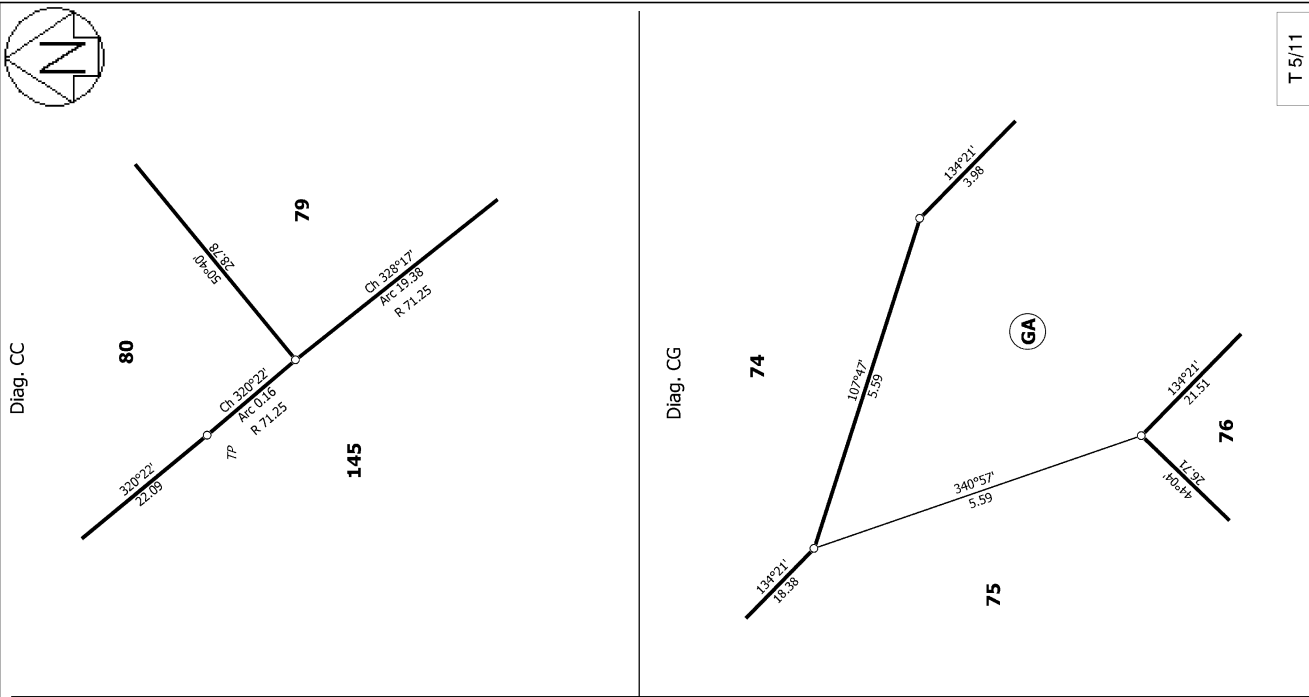
Land District: Canterbury  
 Digitally Generated Plan  
 Generated on: 08/02/2022 09:52:01 Page 8 of 15

Surveyor: Darren James Hocken  
 Firm: Eliot Sinclair & Partners Ltd

**Lots 131-96, 130, 135, 137, 139, 142, 143, 145 and 200 Being Subdivision of Lot 152 DP 556577**

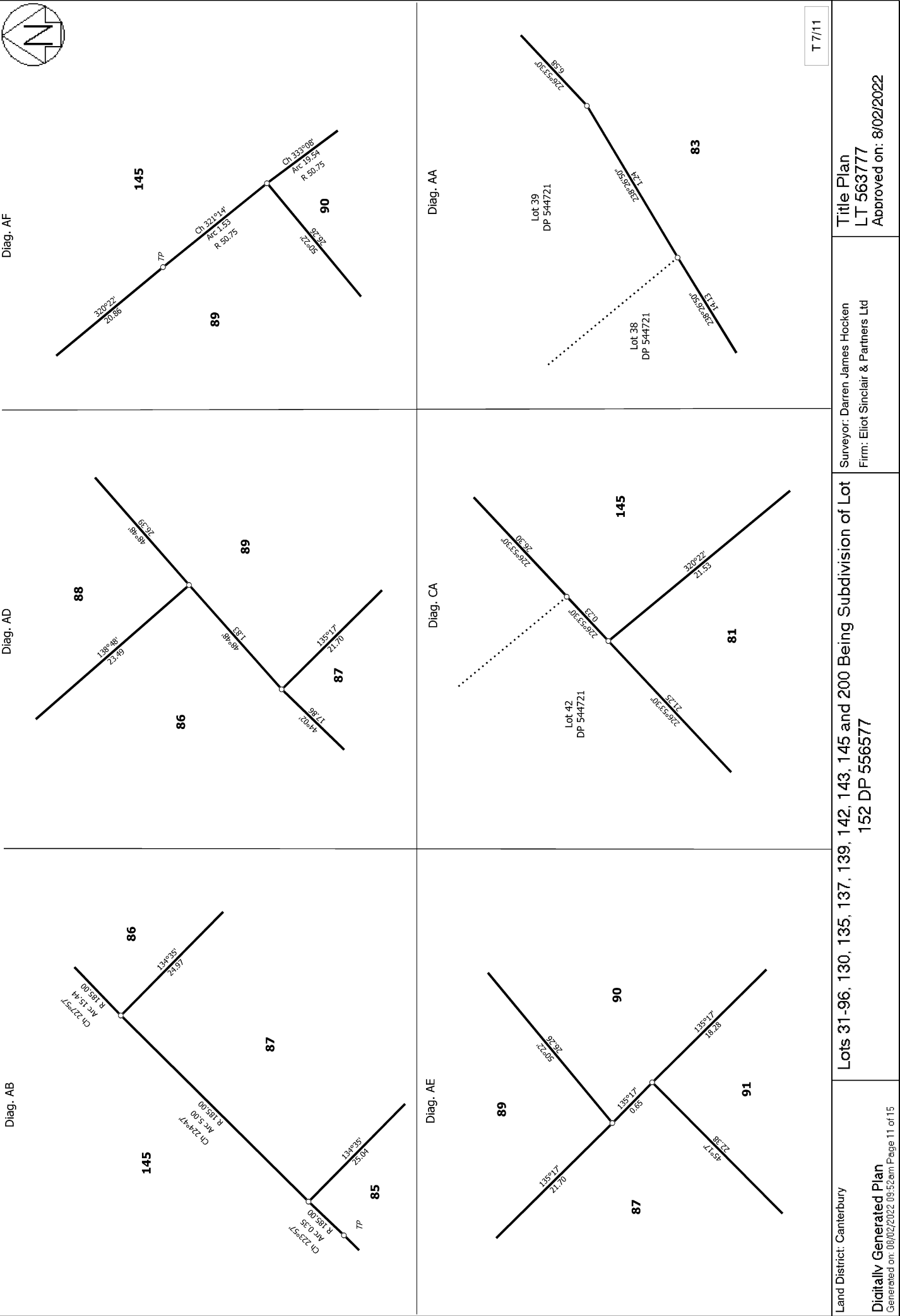
Title Plan  
 LT 563777  
 Approved on: 8/02/2022





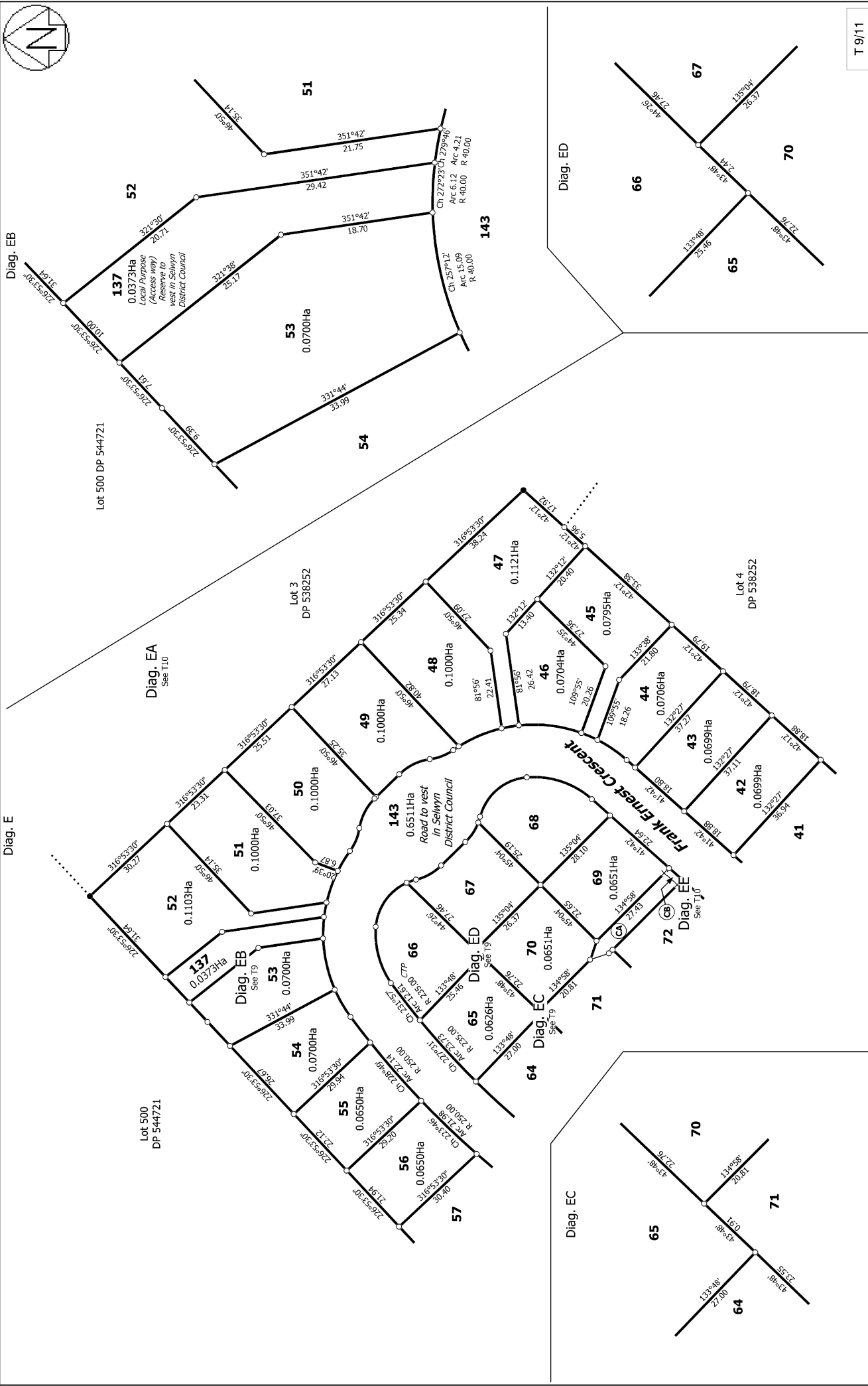
T 5/11	Title Plan LT 563777 Approved on: 8/02/2022	Surveyor: Darren James Hocken Firm: Eliot Sinclair & Partners Ltd	Lots 31-96, 130, 135, 137, 139, 142, 143, 145 and 200 Being Subdivision of Lot 152 DP 556577
Land District: Canterbury	Digitally Generated Plan	Generated on: 08/02/2022 09:52:01 Page 9 of 15	





T 7/11





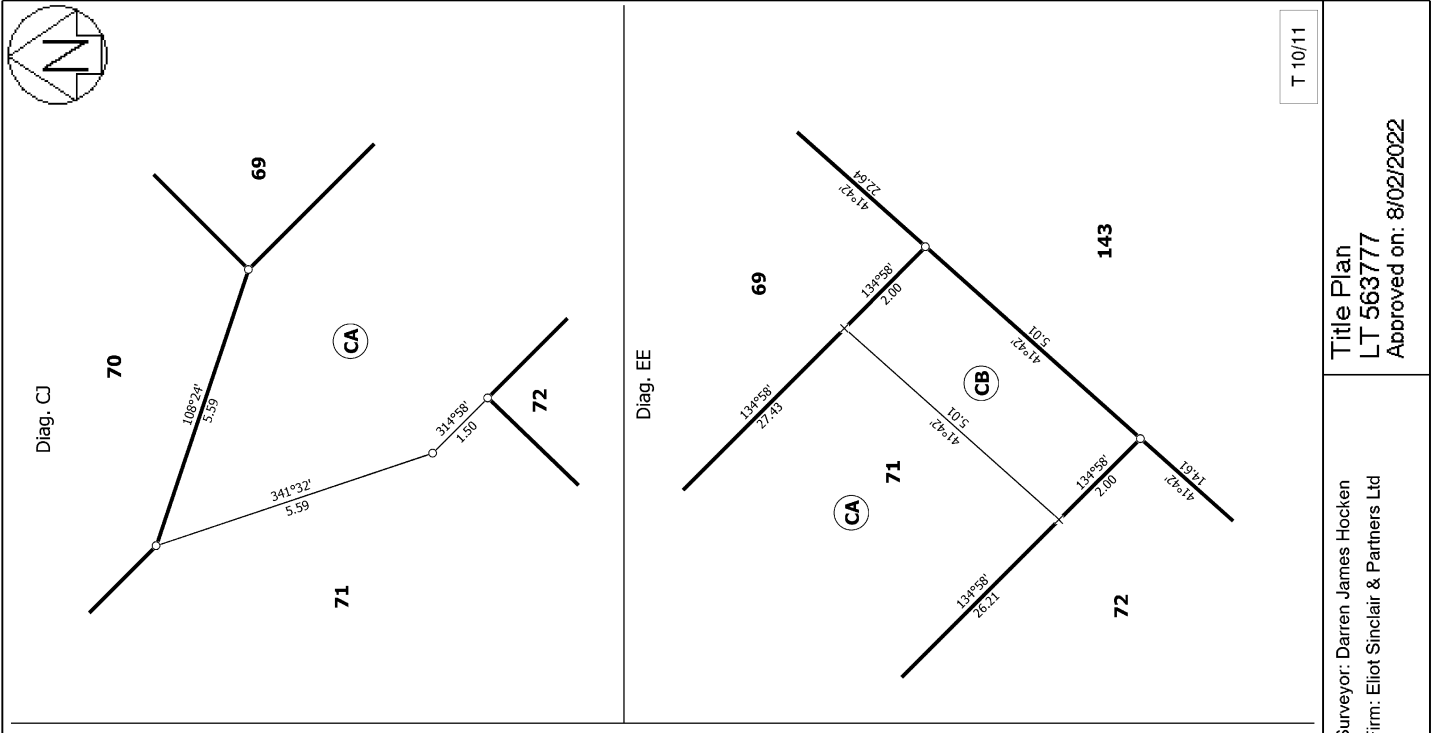
T 9/11

Title Plan  
 LT 563777  
 Approved on: 8/02/2022

Surveyor: Darren James Hocken  
 Firm: Eliot Sinclair & Partners Ltd

Lots 31-96, 130, 135, 137, 139, 142, 143, 145 and 200 Being Subdivision of Lot  
 152 DP 556577

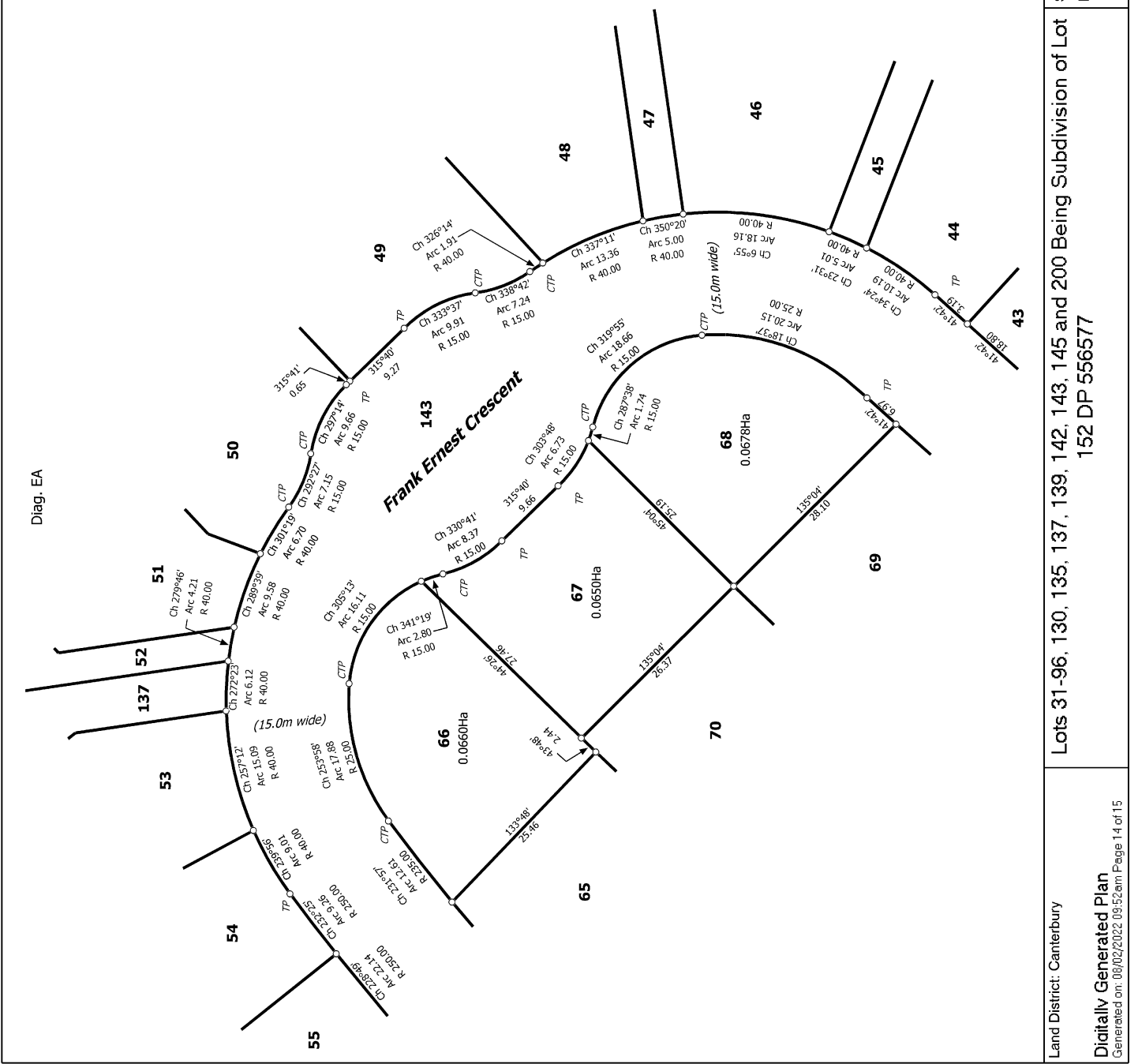
Land District: Canterbury  
 Digitally Generated Plan  
 Generated on: 08/02/2022 09:52:00 Page 13 of 15



T 10/11

Title Plan  
 LT 563777  
 Approved on: 8/02/2022

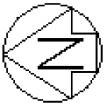
Surveyor: Darren James Hocken  
 Firm: Eliot Sinclair & Partners Ltd



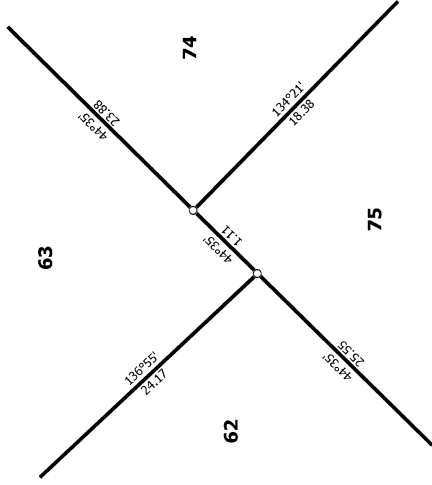
Land District: Canterbury  
 Digitally Generated Plan  
 Generated on: 08/02/2022 09:52:01 Page 14 of 15

Lots 31-96, 130, 135, 137, 139, 142, 143, 145 and 200 Being Subdivision of Lot  
 152 DP 556577

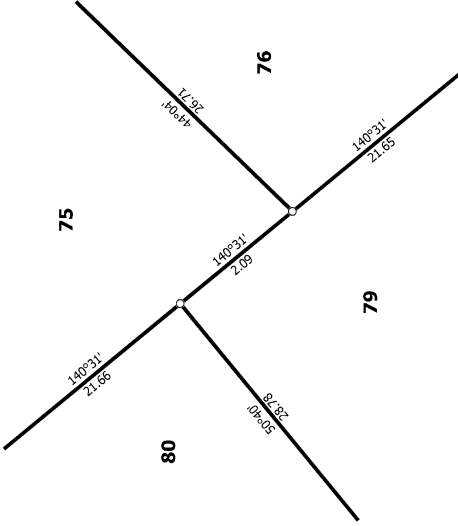
Surveyor: Darren James Hocken  
 Firm: Eliot Sinclair & Partners Ltd



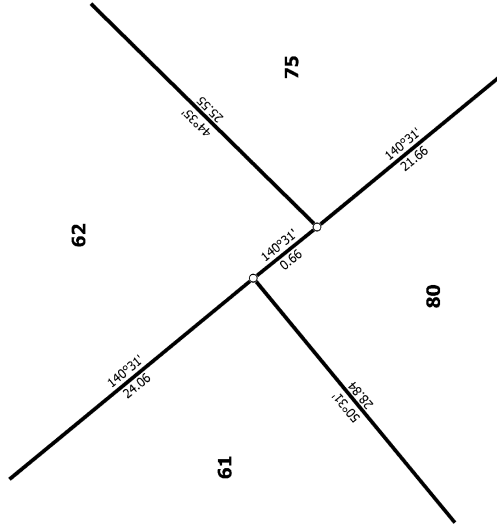
Diag. CF



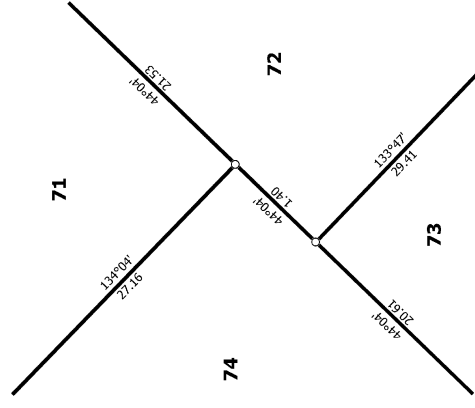
Diag. CE



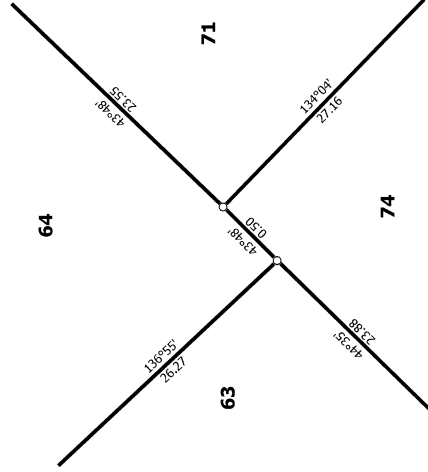
Diag. CD



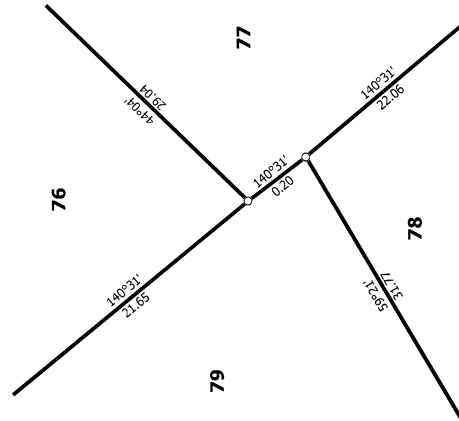
Diag. CI



Diag. CH



Diag. DC



T 11/11

Land District: Canterbury

**Digitally Generated Plan**

Generated on: 08/02/2022 09:52:00 Page 15 of 15

**Lots 31-96, 130, 135, 137, 139, 142, 143, 145 and 200 Being Subdivision of Lot 152 DP 556577**

Surveyor: Darren James Hocken  
Firm: Eliot Sinclair & Partners Ltd

**Title Plan**  
**LT 563777**  
Approved on: 8/02/2022