



Title Plan - LT 593733

Survey Number LT 593733
Surveyor Reference 39630 - Oakbridge Stage 3
Surveyor John William Cochran
Survey Firm Davis Ogilvie & Partners Ltd (Christchurch)
Surveyor Declaration

Survey Details

Dataset Description Lots 121-136, 150-169, 189-198, 500, 501, 600, 601, 1000 and 4000 Being a Subdivision of Lots 4-6 DP 23089, Lot 4000 575457 and Easement over Lot 3 DP 25296

Status Initiated

Land District Canterbury **Survey Class** Class A

Submitted Date **Survey Approval Date**
Deposit Date

Territorial Authorities

Christchurch City

Comprised In

RT 1056037
RT 1085864
RT CB4A/99
RT CB6A/114

Created Parcels

Parcels	Parcel Intent	Area	RT Reference
Lot 121 Deposited Plan 593733	Fee Simple Title	0.0513 Ha	1142709
Lot 122 Deposited Plan 593733	Fee Simple Title	0.0510 Ha	1142710
Lot 123 Deposited Plan 593733	Fee Simple Title	0.0599 Ha	1142711
Lot 124 Deposited Plan 593733	Fee Simple Title	0.0639 Ha	1142712
Lot 125 Deposited Plan 593733	Fee Simple Title	0.0522 Ha	1142713
Lot 126 Deposited Plan 593733	Fee Simple Title	0.0503 Ha	1142714
Lot 127 Deposited Plan 593733	Fee Simple Title	0.0552 Ha	1142715
Lot 128 Deposited Plan 593733	Fee Simple Title	0.0555 Ha	1142716
Lot 129 Deposited Plan 593733	Fee Simple Title	0.0451 Ha	1142717
Lot 130 Deposited Plan 593733	Fee Simple Title	0.0424 Ha	1142718
Lot 131 Deposited Plan 593733	Fee Simple Title	0.0423 Ha	1142719
Lot 132 Deposited Plan 593733	Fee Simple Title	0.0423 Ha	1142720
Lot 133 Deposited Plan 593733	Fee Simple Title	0.0500 Ha	1142721
Lot 134 Deposited Plan 593733	Fee Simple Title	0.0450 Ha	1142722
Lot 135 Deposited Plan 593733	Fee Simple Title	0.0445 Ha	1142723
Lot 136 Deposited Plan 593733	Fee Simple Title	0.0445 Ha	1142724
Lot 150 Deposited Plan 593733	Fee Simple Title	0.0440 Ha	1142725
Lot 151 Deposited Plan 593733	Fee Simple Title	0.0459 Ha	1142726
Lot 152 Deposited Plan 593733	Fee Simple Title	0.0474 Ha	1142727
Lot 153 Deposited Plan 593733	Fee Simple Title	0.0548 Ha	1142728

Title Plan - LT 593733

Created Parcels

Parcels	Parcel Intent	Area	RT Reference
Lot 154 Deposited Plan 593733	Fee Simple Title	0.0595 Ha	1142729
Lot 155 Deposited Plan 593733	Fee Simple Title	0.0544 Ha	1142730
Lot 156 Deposited Plan 593733	Fee Simple Title	0.0502 Ha	1142731
Lot 157 Deposited Plan 593733	Fee Simple Title	0.0482 Ha	1142732
Lot 158 Deposited Plan 593733	Fee Simple Title	0.0535 Ha	1142733
Lot 159 Deposited Plan 593733	Fee Simple Title	0.0582 Ha	1142734
Lot 160 Deposited Plan 593733	Fee Simple Title	0.0558 Ha	1142735
Lot 161 Deposited Plan 593733	Fee Simple Title	0.0492 Ha	1142736
Lot 162 Deposited Plan 593733	Fee Simple Title	0.0488 Ha	1142737
Lot 163 Deposited Plan 593733	Fee Simple Title	0.0554 Ha	1142738
Lot 164 Deposited Plan 593733	Fee Simple Title	0.0550 Ha	1142739
Lot 165 Deposited Plan 593733	Fee Simple Title	0.0450 Ha	1142740
Lot 166 Deposited Plan 593733	Fee Simple Title	0.0450 Ha	1142741
Lot 167 Deposited Plan 593733	Fee Simple Title	0.0500 Ha	1142742
Lot 168 Deposited Plan 593733	Fee Simple Title	0.0519 Ha	1142743
Lot 169 Deposited Plan 593733	Fee Simple Title	0.0563 Ha	1142744
Lot 189 Deposited Plan 593733	Fee Simple Title	0.0400 Ha	1142745
Lot 190 Deposited Plan 593733	Fee Simple Title	0.0355 Ha	1142746
Lot 191 Deposited Plan 593733	Fee Simple Title	0.0379 Ha	1142747
Lot 192 Deposited Plan 593733	Fee Simple Title	0.0381 Ha	1142748
Lot 193 Deposited Plan 593733	Fee Simple Title	0.0390 Ha	1142749
Lot 194 Deposited Plan 593733	Fee Simple Title	0.0484 Ha	1142750
Lot 195 Deposited Plan 593733	Fee Simple Title	0.0503 Ha	1142751
Lot 196 Deposited Plan 593733	Fee Simple Title	0.0526 Ha	1142752
Lot 197 Deposited Plan 593733	Fee Simple Title	0.0814 Ha	1142753
Lot 198 Deposited Plan 593733	Fee Simple Title	0.0800 Ha	1142754
Lot 500 Deposited Plan 593733	Fee Simple Title	0.0097 Ha	Multiple
Lot 501 Deposited Plan 593733	Fee Simple Title	0.0268 Ha	Multiple
Lot 1000 Deposited Plan 593733	Vesting on Deposit for Road	0.8609 Ha	
Lot 4000 Deposited Plan 593733	Fee Simple Title	17.7058 Ha	1142758
Area A Deposited Plan 593733	Easement		
Area B Deposited Plan 593733	Easement		
Area I Deposited Plan 593733	Easement		
Area J Deposited Plan 593733	Easement		
Area K Deposited Plan 593733	Easement		
Area L Deposited Plan 593733	Easement		
Area M Deposited Plan 593733	Easement		
Area N Deposited Plan 593733	Easement		
Area AA Deposited Plan 593733	Easement		
Area D Deposited Plan 593733	Easement		
Area E Deposited Plan 593733	Easement		
Area G Deposited Plan 593733	Easement		
Lot 600 Deposited Plan 593733	Fee Simple Title	0.0005 Ha	1157599



Title Plan - LT 593733

Created Parcels

Parcels	Parcel Intent	Area	RT Reference
Lot 601 Deposited Plan 593733	Fee Simple Title	0.0005 Ha	1157600
Total Area		<u>20.9313 Ha</u>	

DAVIS OGILVIE & PARTNERS LIMITED
 Level 1, 24 Moorhouse Avenue, Addington
 PO Box 589, Christchurch 8140
 0800 999 333 03 366 1653 hello@do.nz
 Offices in Christchurch, Timaru, Nelson & Greymouth. www.do.nz



DP 593733

Memorandum of Easements			
Purpose	Shown	Servient Tenement (Burdened Land)	Dominant Tenement (Benefitted Land)
RIGHT OF WAY, RIGHT TO DRAIN SEWAGE & WATER, RIGHT TO CONVEY WATER, ELECTRICITY & TELECOMMUNICATIONS	A	LOT 500	LOTS 127 & 128
	B	LOT 501	LOTS 158-161

Memorandum of Easements in Gross			
Purpose	Shown	Servient Tenement (Burdened Land)	Grantee
RIGHT TO CONVEY TELECOMMUNICATIONS	A	LOT 500	ENABLE NETWORKS LIMITED
	B	LOT 501	
	AA	LOT 4000	
	E	LOT 4000	
RIGHT TO DRAIN SEWAGE	AA	LOT 4000	CHRISTCHURCH CITY COUNCIL
RIGHT TO CONVEY ELECTRICITY	E, AA	LOT 4000	ORION NEW ZEALAND LIMITED
	B	LOT 501	ORION NEW ZEALAND LIMITED
RIGHT TO DRAIN WATER	D	LOT 3 DP 25296	CHRISTCHURCH CITY COUNCIL
	E & G	LOT 4000	CHRISTCHURCH CITY COUNCIL

Notes

Existing Right to convey water over part marked A on DP 575457 is to be cancelled.
 Existing Right to convey electricity over parts marked B and C on DP 575457 is to be cancelled.
 Existing Right in Gross to convey water over part marked H on DP 575457 is to be cancelled.

Consent Notice

Areas shown as I, J, K, L, M and N are subject to a consent notice.

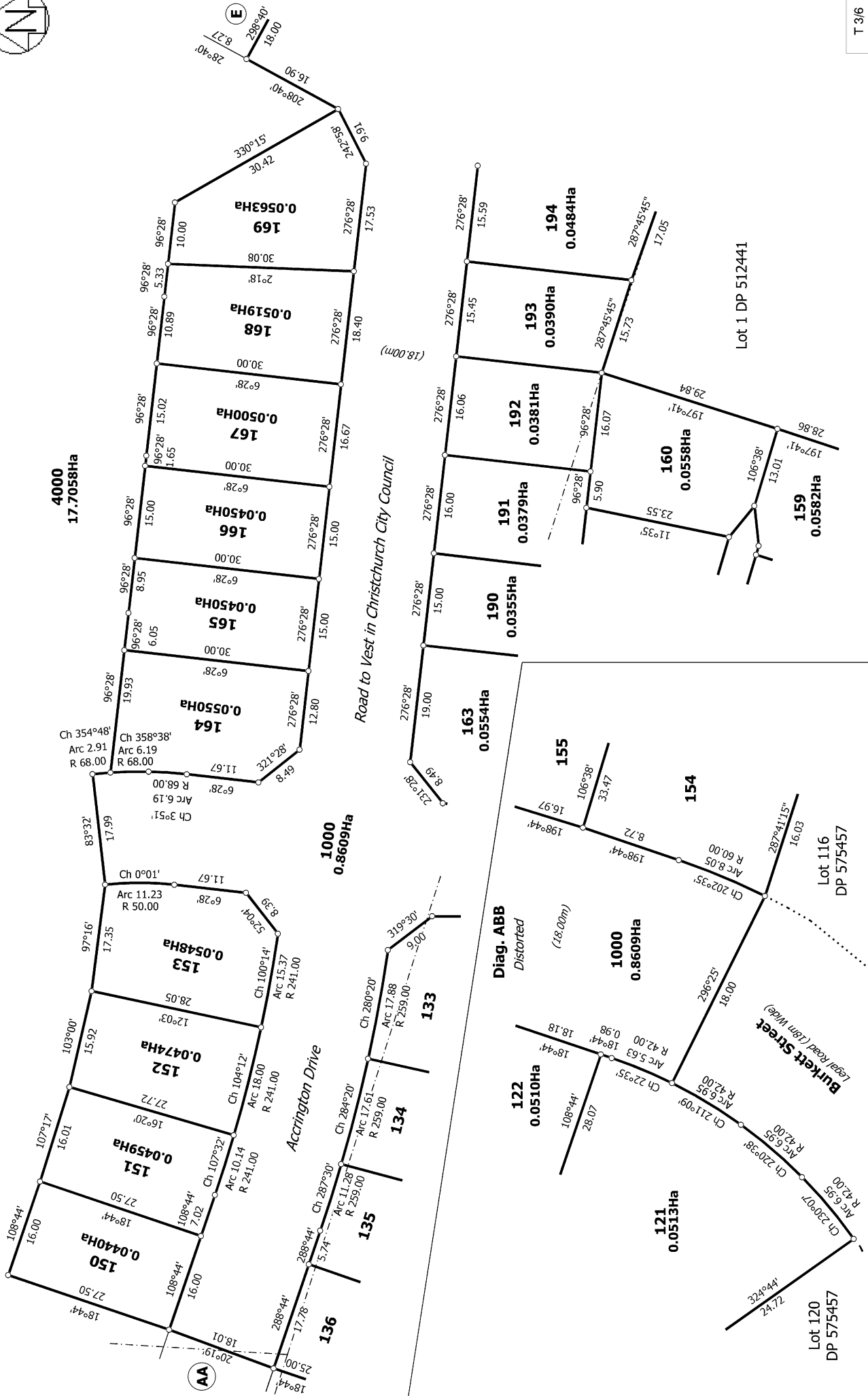
Amalgamation Conditions

That Lot 500 (Legal Access) hereon be held as to two undivided half shares by the owners of Lots 127 and 128 hereon as tenants in common in the said shares and that individual Records of Title issued in accordance therewith.
 LINZ Reference Number - 1800802

That Lot 501 (Legal Access) hereon be held as to four undivided quarter shares by the owners of Lots 158, 159, 160 and 161 hereon as tenants in common in the said shares and that individual Records of Title issued in accordance therewith.
 LINZ Reference Number - 1800802



Diag. ABA



T 3/6

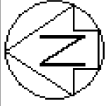
Land District: Canterbury

Digitally Generated Plan
Generated on: 17/10/2023 06:04:46 Page 7 of 10

Lots 121-136, 150-169, 189-198, 501, 600, 601, 1000 and 4000 Being a Subdivision of Lots 4-6 DP 23089, Lot 4000 575457 and Easement over Lot 3 DP 25296

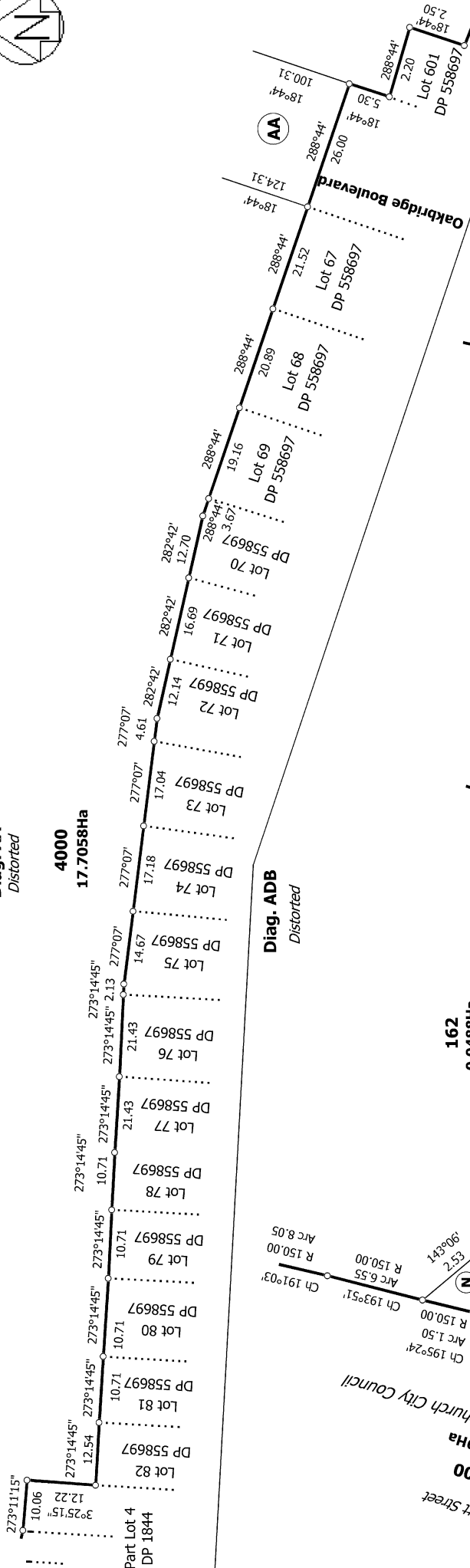
Surveyor: John William Cochran
Firm: Davis Ogilvie & Partners Ltd (Christchurch)

Title Plan
LT 593733
DRAFT



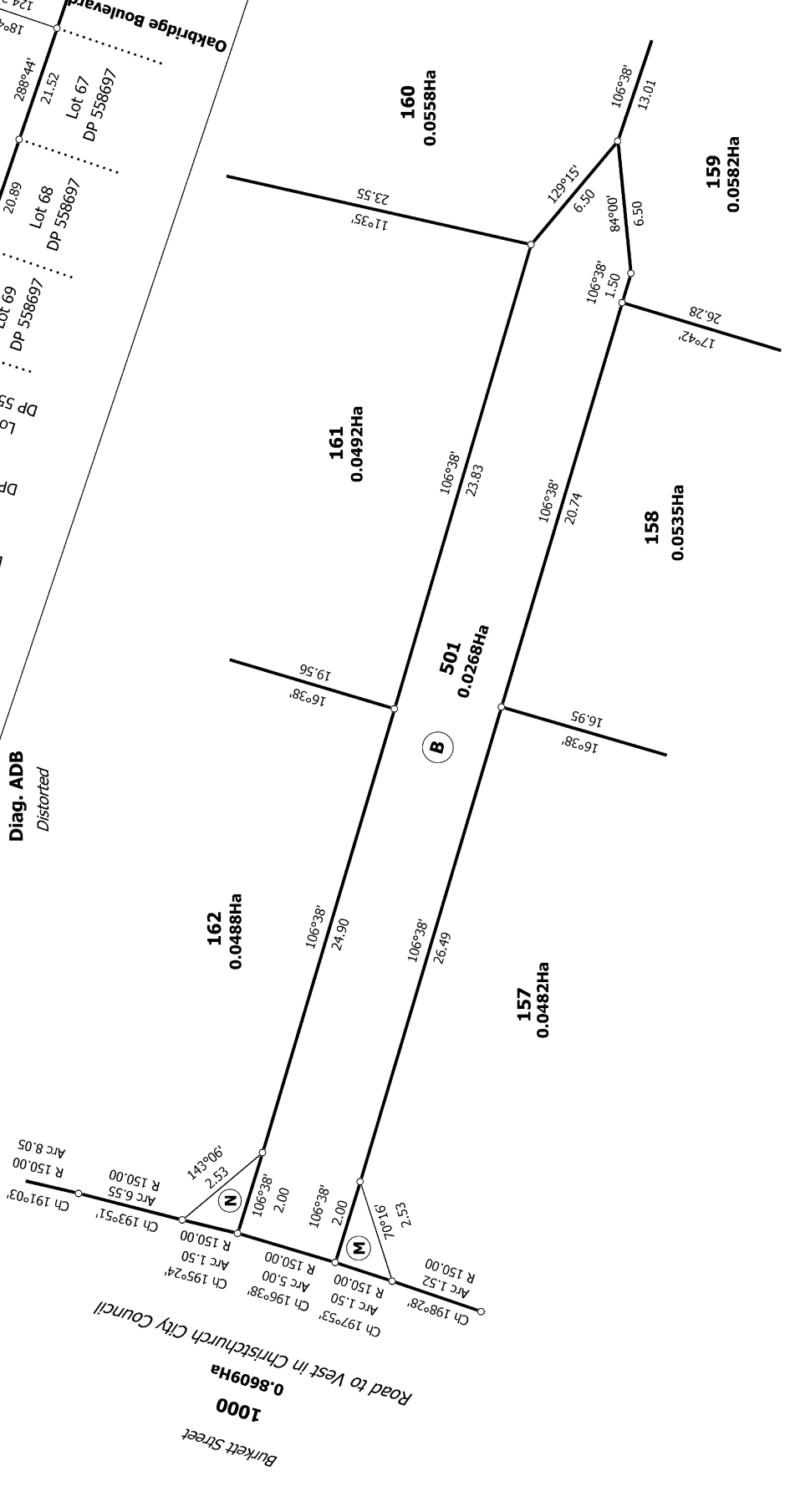
Diag. AA
Distorted

4000
17.7058Ha



Diag. ADB
Distorted

1000
0.8609Ha



T 6/6

Land District: Canterbury

Digitally Generated Plan

Generated on: 17/10/2023 06:04:46 Page 10 of 10

Lots 121-136, 150-169, 189-198, 501, 600, 601, 1000 and 4000 Being a
Subdivision of Lots 4-6 DP 23089, Lot 4000 575457 and Easement over Lot 3
DP 25296

Surveyor: John William Cochran
Firm: Davis Ogilvie & Partners Ltd (Christch)

Title Plan
LT 593733
DRAFT