



Title Plan - LT 614632

Survey Number LT 614632
Surveyor Reference 39630 - Oakbridge Stage 5
Surveyor John William Cochran
Survey Firm Davis Ogilvie & Partners Ltd (Christchurch)
Surveyor Declaration

Survey Details

Dataset Description LOTS 218-254, 505, 506, 1002, 2003 AND 4000 BEING A SUBDIVISION OF LOT 4000 DP 606190

Status Initiated

Land District Canterbury **Survey Class** Class A

Submitted Date **Survey Approval Date**
Deposit Date

Territorial Authorities

Christchurch City

Comprised In

RT 1201975

Created Parcels

Parcels	Parcel Intent	Area	RT Reference
Lot 218 Deposited Plan 614632	Fee Simple Title	0.0513 Ha	1226575
Lot 219 Deposited Plan 614632	Fee Simple Title	0.0511 Ha	1226576
Lot 220 Deposited Plan 614632	Fee Simple Title	0.0506 Ha	1226577
Lot 221 Deposited Plan 614632	Fee Simple Title	0.0506 Ha	1226578
Lot 222 Deposited Plan 614632	Fee Simple Title	0.0506 Ha	1226579
Lot 223 Deposited Plan 614632	Fee Simple Title	0.0502 Ha	1226580
Lot 224 Deposited Plan 614632	Fee Simple Title	0.0578 Ha	1226581
Lot 225 Deposited Plan 614632	Fee Simple Title	0.0515 Ha	1226582
Lot 226 Deposited Plan 614632	Fee Simple Title	0.0462 Ha	1226583
Lot 227 Deposited Plan 614632	Fee Simple Title	0.0512 Ha	1226584
Lot 228 Deposited Plan 614632	Fee Simple Title	0.0537 Ha	1226585
Lot 229 Deposited Plan 614632	Fee Simple Title	0.0471 Ha	1226586
Lot 230 Deposited Plan 614632	Fee Simple Title	0.0442 Ha	1226587
Lot 231 Deposited Plan 614632	Fee Simple Title	0.0582 Ha	1226588
Lot 232 Deposited Plan 614632	Fee Simple Title	0.0500 Ha	1226589
Lot 233 Deposited Plan 614632	Fee Simple Title	0.0500 Ha	1226590
Lot 234 Deposited Plan 614632	Fee Simple Title	0.0500 Ha	1226591
Lot 235 Deposited Plan 614632	Fee Simple Title	0.0500 Ha	1226592
Lot 236 Deposited Plan 614632	Fee Simple Title	0.0500 Ha	1226593
Lot 237 Deposited Plan 614632	Fee Simple Title	0.0500 Ha	1226594
Lot 238 Deposited Plan 614632	Fee Simple Title	0.0500 Ha	1226595
Lot 239 Deposited Plan 614632	Fee Simple Title	0.0500 Ha	1226596
Lot 240 Deposited Plan 614632	Fee Simple Title	0.0500 Ha	1226597

Title Plan - LT 614632

Created Parcels

Parcels	Parcel Intent	Area	RT Reference
Lot 241 Deposited Plan 614632	Fee Simple Title	0.0513 Ha	1226598
Lot 242 Deposited Plan 614632	Fee Simple Title	0.0498 Ha	1226599
Lot 243 Deposited Plan 614632	Fee Simple Title	0.0471 Ha	1226600
Lot 244 Deposited Plan 614632	Fee Simple Title	0.0566 Ha	1226601
Lot 245 Deposited Plan 614632	Fee Simple Title	0.0585 Ha	1226602
Lot 246 Deposited Plan 614632	Fee Simple Title	0.0433 Ha	1226603
Lot 247 Deposited Plan 614632	Fee Simple Title	0.0425 Ha	1226604
Lot 248 Deposited Plan 614632	Fee Simple Title	0.0425 Ha	1226605
Lot 249 Deposited Plan 614632	Fee Simple Title	0.0425 Ha	1226606
Lot 250 Deposited Plan 614632	Fee Simple Title	0.0426 Ha	1226607
Lot 251 Deposited Plan 614632	Fee Simple Title	0.0513 Ha	1226608
Lot 252 Deposited Plan 614632	Fee Simple Title	0.0552 Ha	1226609
Lot 253 Deposited Plan 614632	Fee Simple Title	0.0582 Ha	1226610
Lot 254 Deposited Plan 614632	Fee Simple Title	0.0550 Ha	1226611
Lot 505 Deposited Plan 614632	Fee Simple Title	0.0105 Ha	Multiple
Lot 506 Deposited Plan 614632	Fee Simple Title	0.0170 Ha	Multiple
Lot 1002 Deposited Plan 614632	Vesting on Deposit for Road	0.5434 Ha	1226615
Lot 2003 Deposited Plan 614632	Vesting on Deposit for Local Purpose Reserve	0.0224 Ha	1226616
Area G Deposited Plan 614632	Easement		
Area F Deposited Plan 614632	Easement		
Lot 4000 Deposited Plan 614632	Fee Simple Title	12.6130 Ha	1226617
Area AA Deposited Plan 614632	Easement		
Area S Deposited Plan 614632	Easement		
Area T Deposited Plan 614632	Easement		
Area U Deposited Plan 614632	Easement		
Area V Deposited Plan 614632	Easement		
Total Area		<hr/> 15.0670 Ha	

LT 614632 Schedule/Memorandum

Land registration district
Canterbury

Territorial authority
Christchurch City

Memorandum of Easements

Parcels shown with a prefix of *HL*- include height-limited boundaries

PURPOSE	SHOWN	BURDENED LAND	BENEFITED LAND
Right of way Right to drain sewage, water Right to convey electricity, telecommunications, water	F	Lot 505	Lot 243, Lot 244
" "	G	Lot 506	Lot 252, Lot 253

Memorandum of Easements in Gross

PURPOSE	SHOWN	BURDENED LAND	GRANTEE
Right to convey telecommunications	F	Lot 505	Enable Networks Limited
" "	G	Lot 506	Enable Networks Limited

Schedule of Existing Easements in Gross

PURPOSE	SHOWN	BURDENED LAND	CREATING DOCUMENT
Right to convey electricity	AA	Lot 4000	12818378.11
Right to convey telecommunications	AA	Lot 4000	13183811.10
Right to drain sewage, water Right to convey water	AA	Lot 4000	13183811.11

Amalgamation Conditions

- That Lot 505 (Legal Access) hereon be held as to two undivided half shares by the owners of Lots 243 and 244 hereon as tenants in common in the said shares and that individual Records of Title issued in accordance therewith.

- That Lot 506 (Legal Access) hereon be held as to two undivided half shares by the owners of Lots 252 and 253 hereon as tenants in common in the said shares and that individual Records of Title issued in accordance therewith.

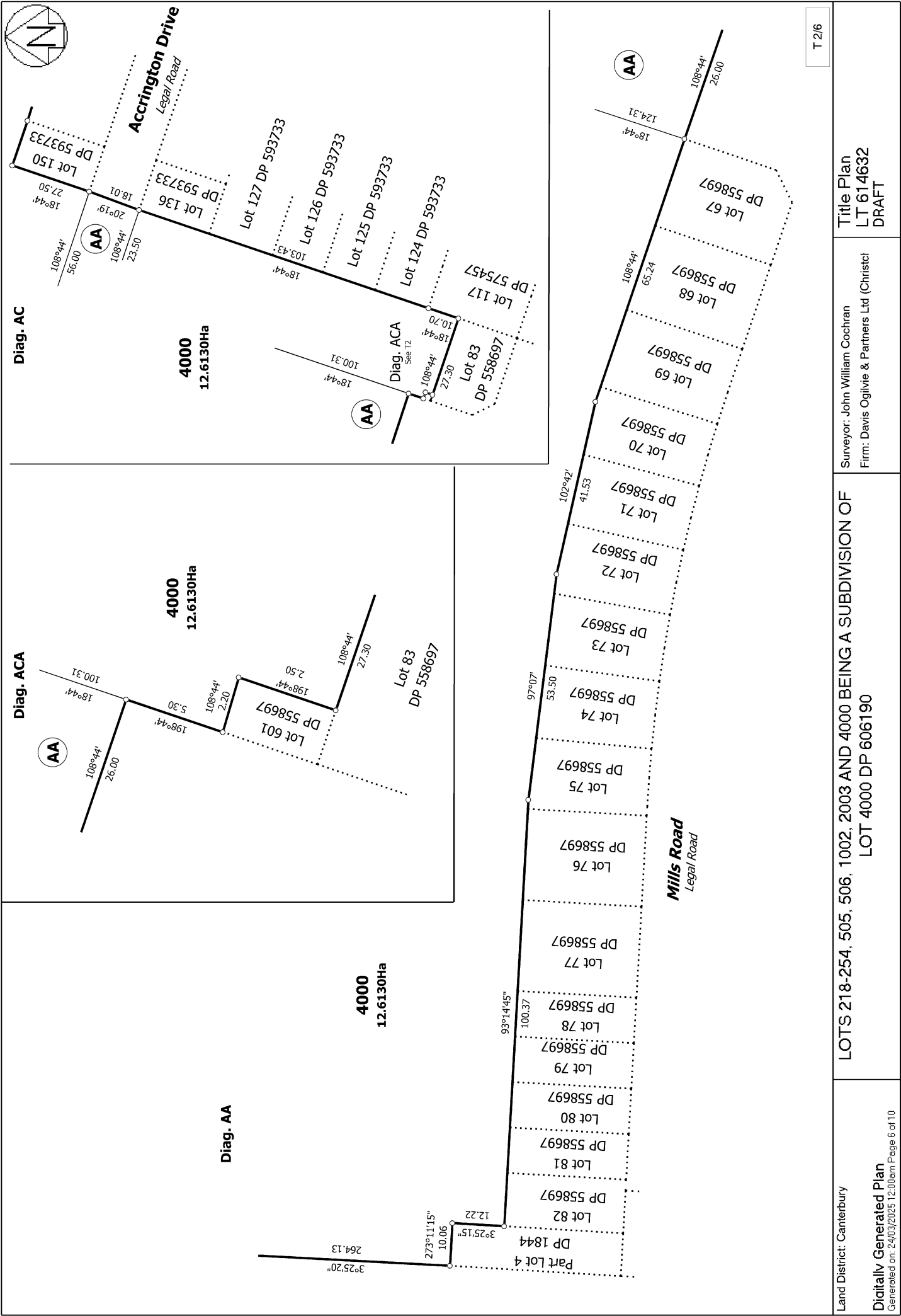
LINZ Reference Number: --

Notes

Easements created by E.I 13183811.10 (Areas F DP 606190) are to be part cancelled.

Easements created by E.I 13183811.11 (Areas F DP 606190) are to be part cancelled.

Areas shown as S, T, U and V are subject to a consent notice (visibility splay).



T 2/6

Land District: Canterbury

Digitally Generated Plan

Generated on: 24/03/2025 12:00pm Page 6 of 10

LOTS 218-254, 505, 506, 1002, 2003 AND 4000 BEING A SUBDIVISION OF

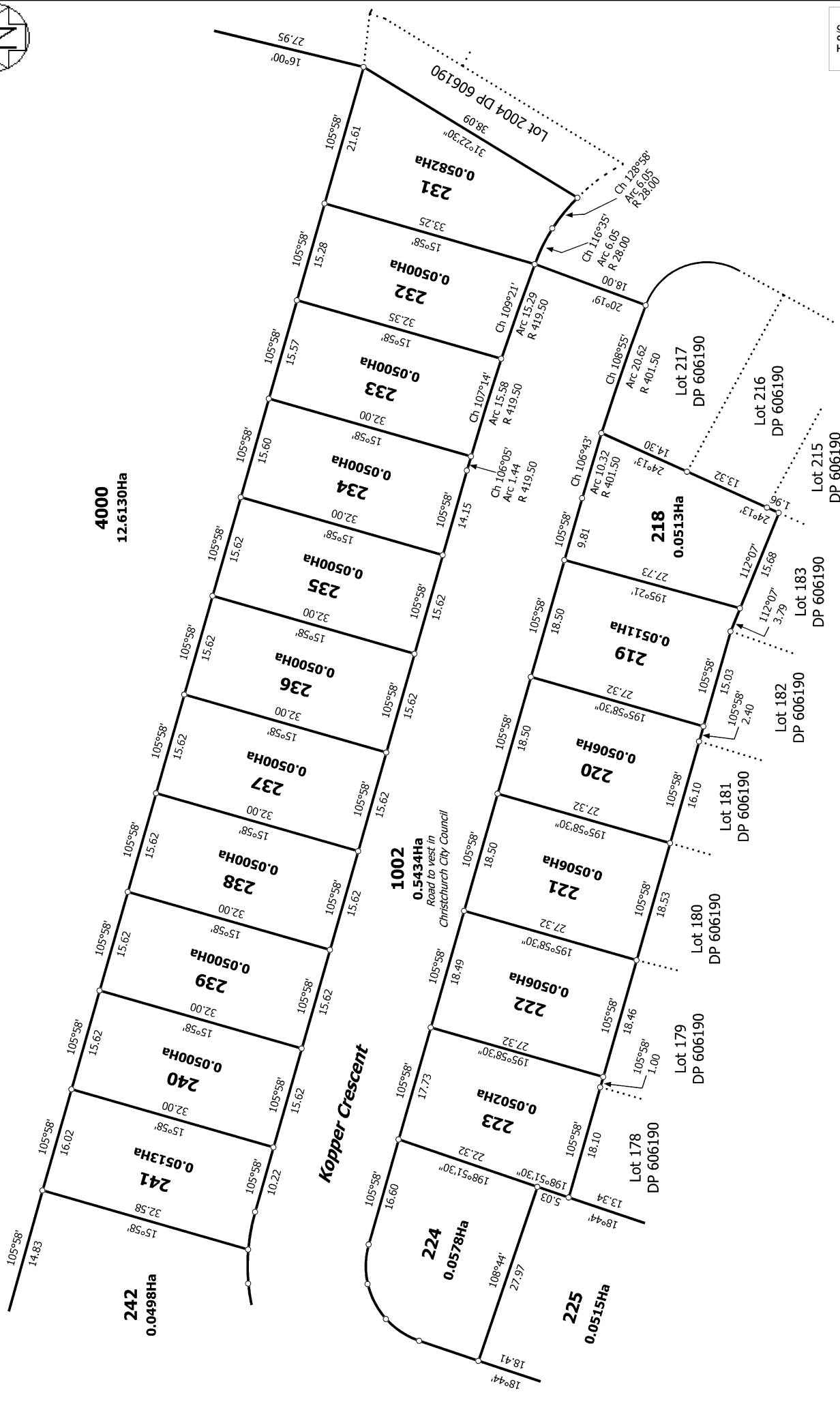
LOT 4000 DP 606190

Surveyor: John William Cochran
Firm: Davis Ogilvie & Partners Ltd (Christchurch)

Title Plan
LT 614632
DRAFT

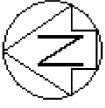


Diag. B

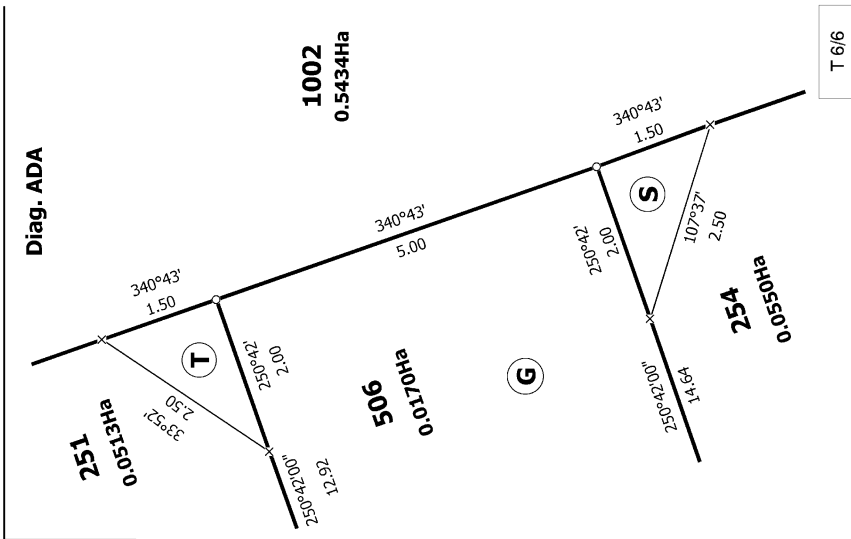
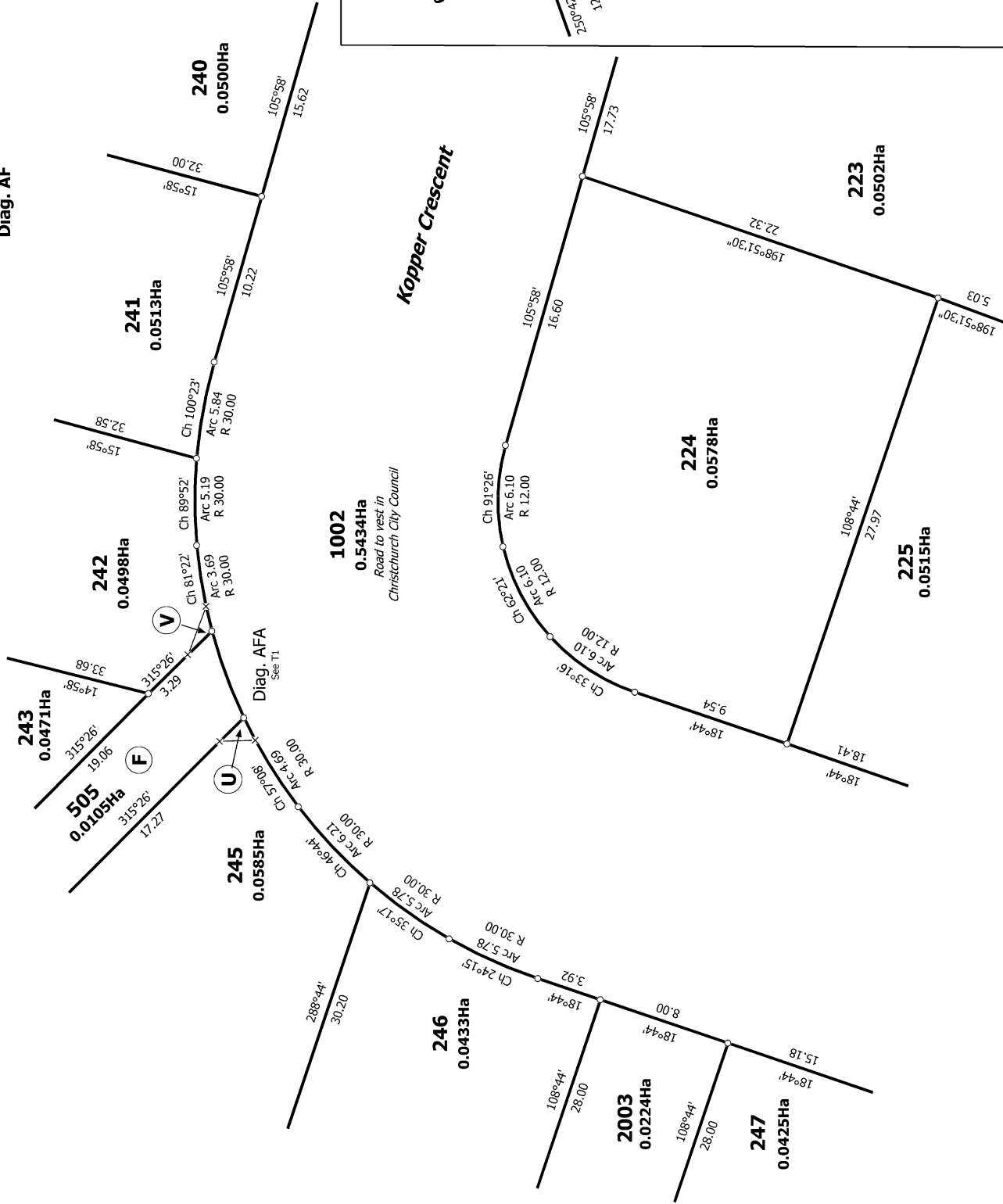


T 3/6

<p>Land District: Canterbury</p> <p>Digitally Generated Plan</p> <p>Generated on: 24/03/2025 12:00pm Page 7 of 10</p>	<p>LOTS 218-254, 505, 506, 1002, 2003 AND 4000 BEING A SUBDIVISION OF LOT 4000 DP 606190</p> <p>Surveyor: John William Cochran</p> <p>Firm: Davis Ogilvie & Partners Ltd (Christchurch)</p> <p>Title Plan LT 614632 DRAFT</p>
--	---



Diag. AF



T 6/6

Land District: Canterbury

Digitally Generated Plan

Generated on: 24/03/2025 12:00pm Page 10 of 10

LOTS 218-254, 505, 1002, 2003 AND 4000 BEING A SUBDIVISION OF
LOT 4000 DP 606190

Surveyor: John William Cochran
Firm: Davis Ogilvie & Partners Ltd (Christcl

Title Plan
LT 614632
DRAFT