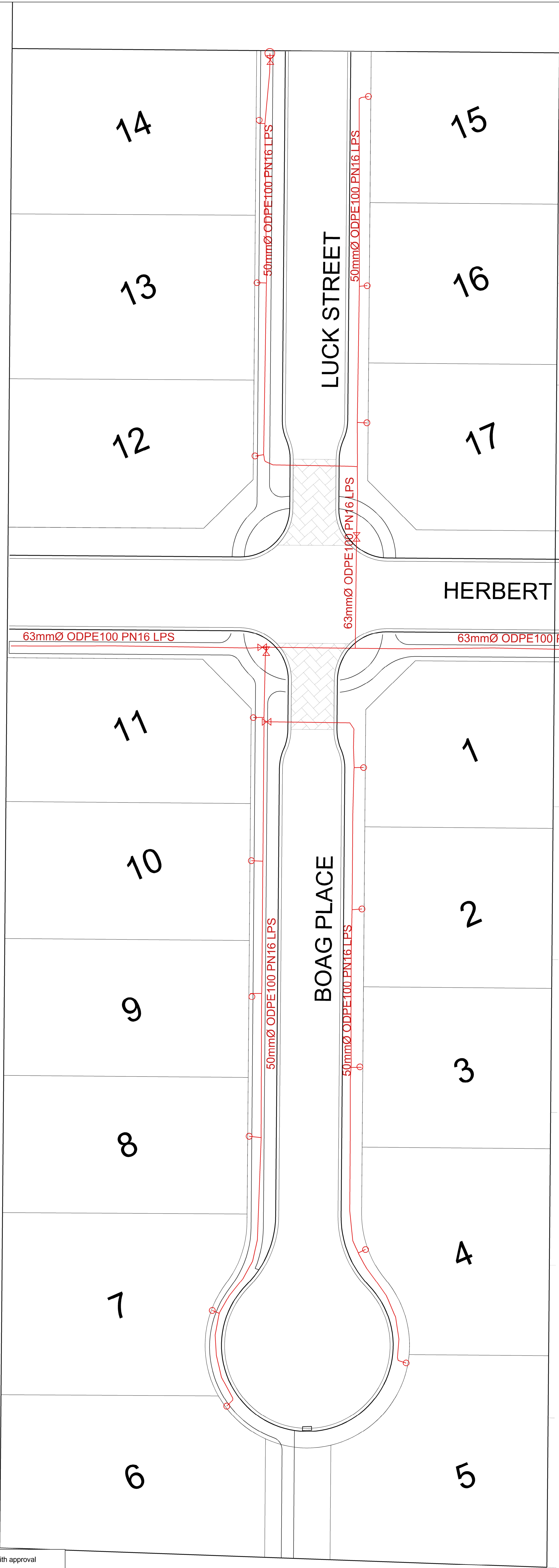


GENERAL NOTES

- All works shall comply with the Civil Engineering Construction Standard Specifications - (C.S.S.) - parts 1 & 3-7 & the Infrastructure Design Standard.
- Any runoff of stormwater from the site is to be controlled. See separate Erosion & Sediment Control Management Plan. In addition, silt socks are to be placed at all sumps.
- All care has been taken to ensure existing services are shown correctly on this plan. However, on site location of services with the respective authorities will be essential.
- All pipe installation is to be in terms of the Current IDS and CSS. This includes the long socket connectors and corbel detail to CSS SD341.
- All RCRJ pipe joints to be wrapped.
- Where pvc-u pipes are subject to vehicular traffic standard concrete protection is to be used where cover is less than 750mm in roads & less than 600mm in r.o.w.
- Standard concrete protection as per CSS SD342 type E.

LOW PRESSURE SEWER NOTES

- All low pressure (LPS) pipes are referred to by the nominal outside diameter (OD).
- All low pressure sewer pipes are polyethylene (PE100, PN 16/SDR 11).
- All low pressure sewer laterals are 40 OD pipes.
- Install property boundary kit within the road reserve for each lot, adjacent to the boundary as per CSS SD 384.
- To be generally in accordance with the typical cross sections, but offsets are to suit other services in the common trench. All services to have accepted clearances.
- Offsets to suit other services (ensure 450mm clearance)



LEGEND

\* 40.30

[F40.00]

[K40.00]

EXISTING GROUND LEVEL

PROPOSED SECTION LEVEL

PROPOSED KERB LEVEL

SEWER MAIN / MAN HOLE

PROPOSED STREET LIGHT

WATER MAIN

KERB / SUMP

SLOPE ON SECTION

SECONDARY FLOW PATH

FILL AREA

VALVE

9x5 INSPECTION BOX

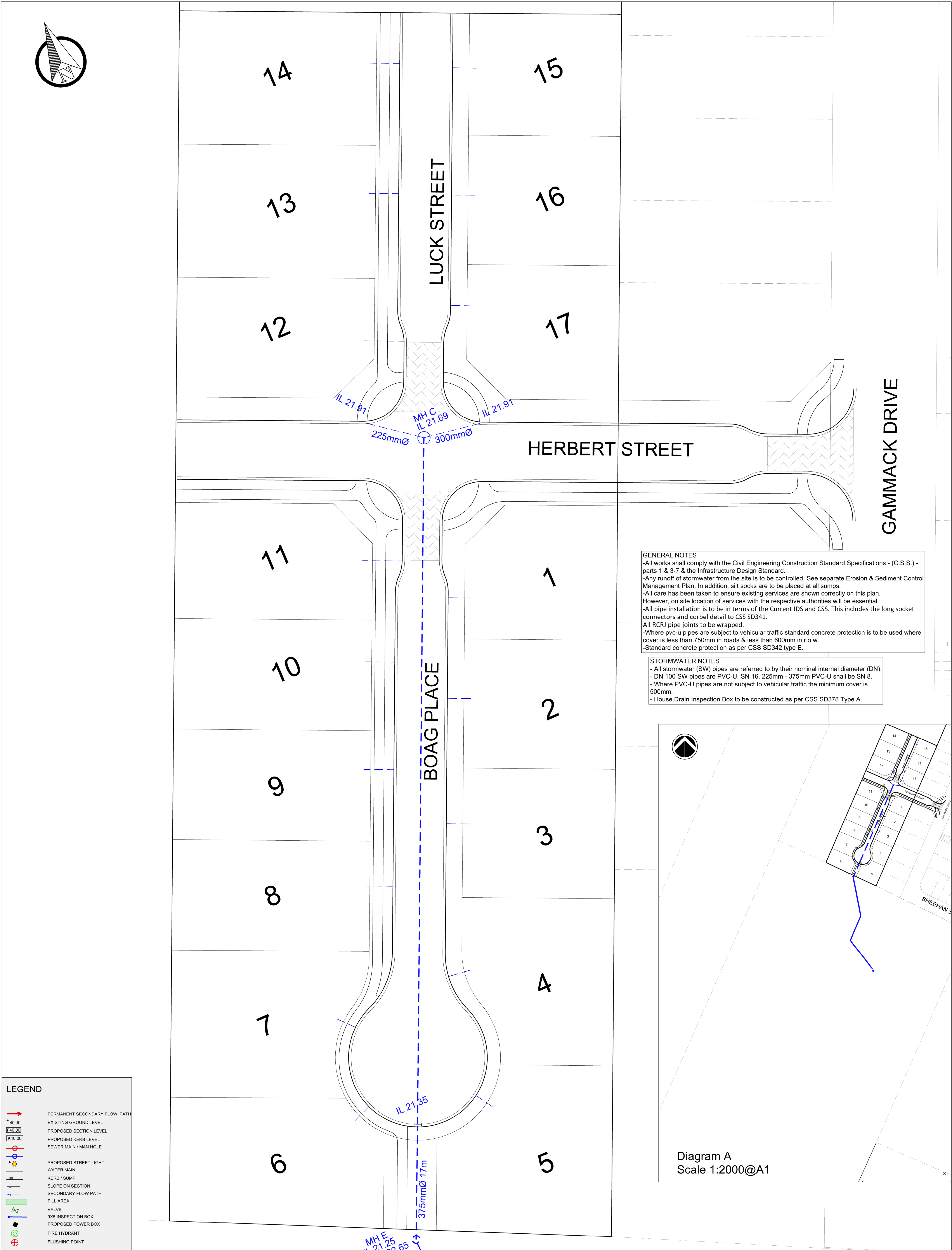
PROPOSED POWER BOX

LPS BOUNDARY KIT

FLUSHING POINT

Disclaimer: This document shall only be reproduced in full with approval from Suburban Estates  
Services shown are indicative only

A	11/20	CCC-ISSUE
issue	date	reason

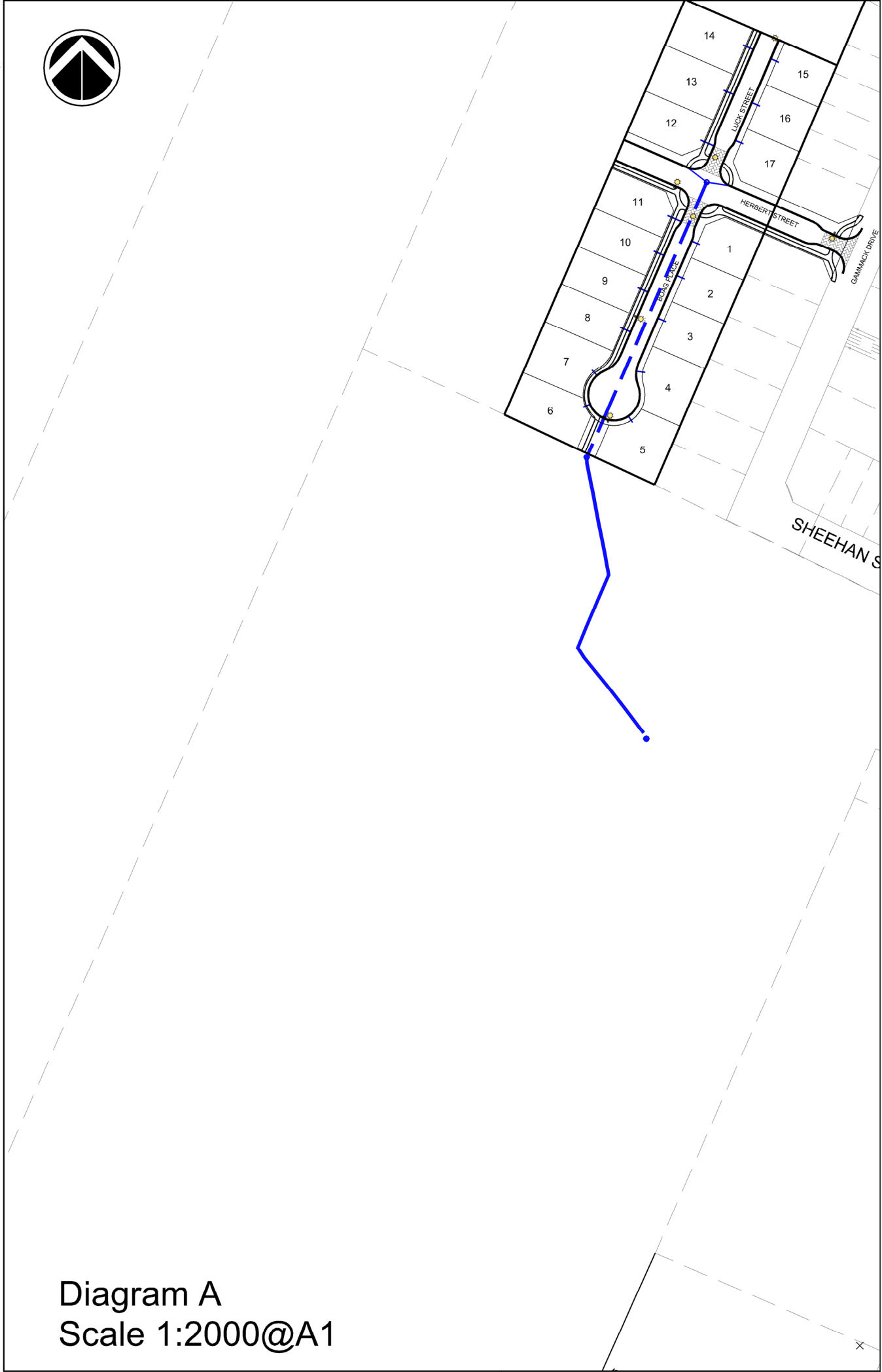


**GENERAL NOTES**

- All works shall comply with the Civil Engineering Construction Standard Specifications - (C.S.S.) - parts 1 & 3-7 & the Infrastructure Design Standard.
- Any runoff of stormwater from the site is to be controlled. See separate Erosion & Sediment Control Management Plan. In addition, silt socks are to be placed at all sumps.
- All care has been taken to ensure existing services are shown correctly on this plan. However, on site location of services with the respective authorities will be essential.
- All pipe installation is to be in terms of the Current IDS and CSS. This includes the long socket connectors and corbel detail to CSS SD341.
- All RCRJ pipe joints to be wrapped.
- Where pvc-u pipes are subject to vehicular traffic standard concrete protection is to be used where cover is less than 750mm in roads & less than 600mm in r.o.w.
- Standard concrete protection as per CSS SD342 type E.

**STORMWATER NOTES**

- All stormwater (SW) pipes are referred to by their nominal internal diameter (DN).
- DN 100 SW pipes are PVC-U, SN 16. 225mm - 375mm PVC-U shall be SN 8.
- Where PVC-U pipes are not subject to vehicular traffic the minimum cover is 500mm.
- House Drain Inspection Box to be constructed as per CSS SD378 Type A.



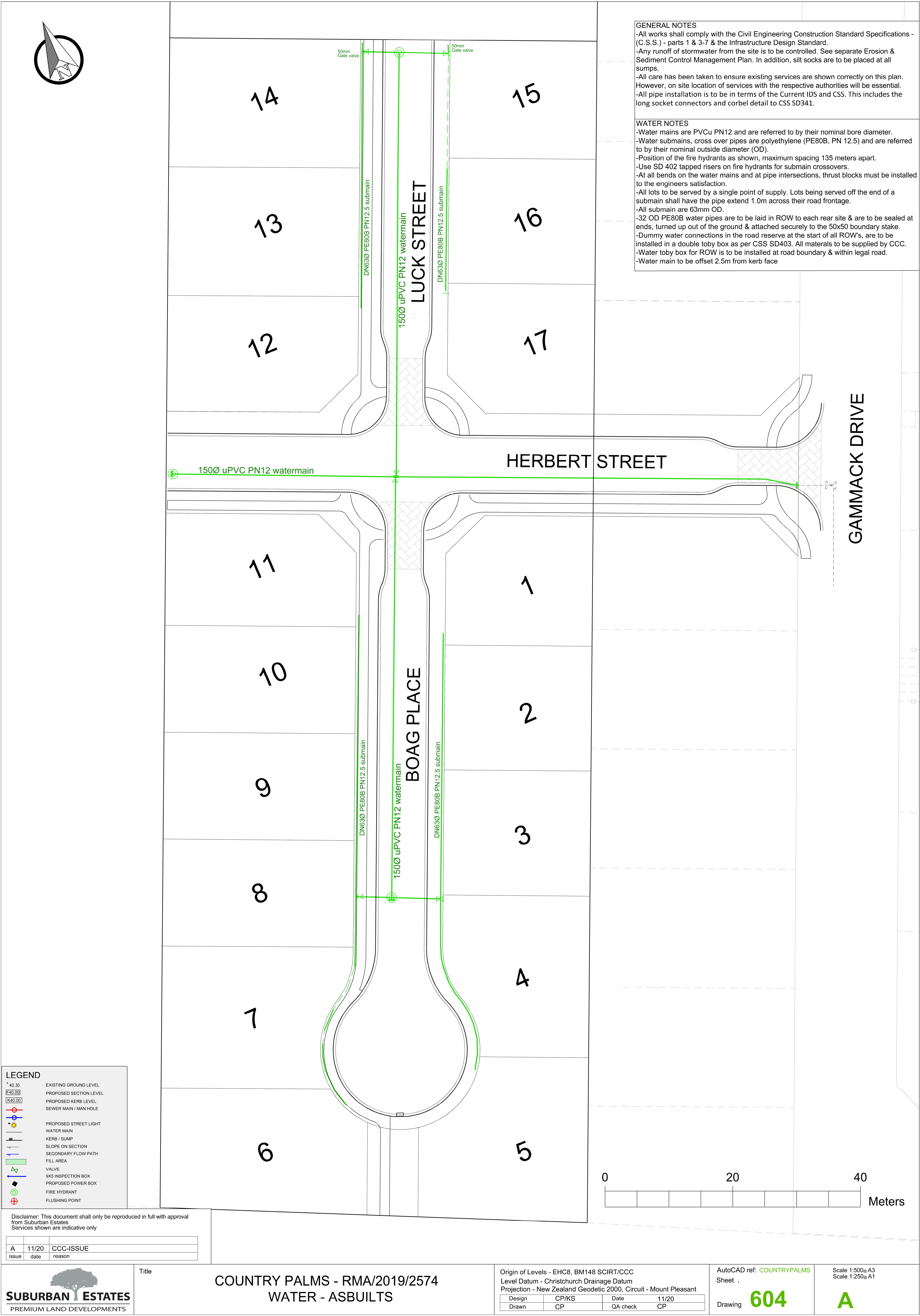
**LEGEND**

	PERMANENT SECONDARY FLOW PATH
	EXISTING GROUND LEVEL
	PROPOSED SECTION LEVEL
	PROPOSED KERB LEVEL
	SEWER MAIN / MAN HOLE
	PROPOSED STREET LIGHT
	WATER MAIN
	KERB / SUMP
	SLOPE ON SECTION
	SECONDARY FLOW PATH
	FILL AREA
	VALVE
	9XS INSPECTION BOX
	PROPOSED POWER BOX
	FIRE HYDRANT
	FLUSHING POINT

Disclaimer: This document shall only be reproduced in full with approval from Suburban Estates

A	11/20	CCC-ISSUE
issue	date	reason





**GENERAL NOTES**

- All works shall comply with the Civil Engineering Construction Standard Specifications - (C.S.S.) - parts 1 & 3-7 & the Infrastructure Design Standard.
- Any runoff of stormwater from the site is to be controlled. See separate Erosion & Sediment Control Management Plan. In addition, silt socks are to be placed at all sumps.
- All care has been taken to ensure existing services are shown correctly on this plan. However, on site location of services with the respective authorities will be essential.
- All pipe installation is to be in terms of the Current IDS and CSS. This includes the long socket connectors and corbel detail to CSS SD341.

**WATER NOTES**

- Water mains are PVCu PN12 and are referred to by their nominal bore diameter.
- Water submains, cross over pipes are polyethylene (PE80B, PN 12.5) and are referred to by their nominal outside diameter (OD).
- Position of the fire hydrants as shown, maximum spacing 135 meters apart.
- Use SD 402 tapped risers on fire hydrants for submain crossovers.
- At all bends on the water mains and at pipe intersections, thrust blocks must be installed to the engineers satisfaction.
- All lots to be served by a single point of supply. Lots being served off the end of a submain shall have the pipe extend 1.0m across their road frontage.
- All submain are 63mm OD.
- 32 OD PE80B water pipes are to be laid in ROW to each rear site & are to be sealed at ends, turned up out of the ground & attached securely to the 50x50 boundary stake.
- Dummy water connections in the road reserve at the start of all ROW's, are to be installed in a double toby box as per CSS SD403. All materials to be supplied by CCC.
- Water toby box for ROW is to be installed at road boundary & within legal road.
- Water main to be offset 2.5m from kerb face

**LEGEND**

\* 40.30  
[F40.00]  
[K40.00]

PROPOSED STREET LIGHT

WATER MAIN

KERB / SUMP

SLOPE ON SECTION

SECONDARY FLOW PATH

FILL AREA

VALVE

9x5 INSPECTION BOX

PROPOSED POWER BOX

FIRE HYDRANT

FLUSHING POINT

EXISTING GROUND LEVEL

PROPOSED SECTION LEVEL

PROPOSED KERB LEVEL

SEWER MAIN / MAN HOLE

Disclaimer: This document shall only be reproduced in full with approval from Suburban Estates  
Services shown are indicative only

A	11/20	CCC-ISSUE
issue	date	reason