



# Title Plan - LT 558697

---

**Survey Number** LT 558697  
**Surveyor Reference** 34300 - Oakbridge Stage 1  
**Surveyor** Jared David Wright  
**Survey Firm** Davis Ogilvie & Partners Ltd (Christchurch)  
**Surveyor Declaration**

---

## Survey Details

**Dataset Description** Lots 1 - 83, 600, 601, 1000, 2000, 2001, 3000 and 4000 Being a Subdivision of Lots 2 and 3 DP 24826, Lot 2 DP 301363, and Lot 1 DP 512479

**Status** Initiated

**Land District** Canterbury **Survey Class** Class A

**Submitted Date** **Survey Approval Date**  
**Deposit Date**

---

## Territorial Authorities

Christchurch City

---

## Comprised In

RT 5923  
RT CB15B/1494  
RT 789295

---

## Created Parcels

Parcels	Parcel Intent	Area	RT Reference
Lot 1 Deposited Plan 558697	Fee Simple Title	0.0565 Ha	981724
Lot 2 Deposited Plan 558697	Fee Simple Title	0.0565 Ha	981725
Lot 3 Deposited Plan 558697	Fee Simple Title	0.0565 Ha	981726
Lot 4 Deposited Plan 558697	Fee Simple Title	0.0565 Ha	981727
Lot 5 Deposited Plan 558697	Fee Simple Title	0.0565 Ha	981728
Lot 6 Deposited Plan 558697	Fee Simple Title	0.0573 Ha	981729
Lot 7 Deposited Plan 558697	Fee Simple Title	0.0600 Ha	981730
Lot 8 Deposited Plan 558697	Fee Simple Title	0.0600 Ha	981731
Lot 9 Deposited Plan 558697	Fee Simple Title	0.0600 Ha	981732
Lot 10 Deposited Plan 558697	Fee Simple Title	0.0600 Ha	981733
Lot 11 Deposited Plan 558697	Fee Simple Title	0.0600 Ha	981734
Lot 12 Deposited Plan 558697	Fee Simple Title	0.0627 Ha	981735
Lot 13 Deposited Plan 558697	Fee Simple Title	0.0550 Ha	981736
Lot 14 Deposited Plan 558697	Fee Simple Title	0.0600 Ha	981737
Lot 15 Deposited Plan 558697	Fee Simple Title	0.0600 Ha	981738
Lot 16 Deposited Plan 558697	Fee Simple Title	0.0600 Ha	981739
Lot 17 Deposited Plan 558697	Fee Simple Title	0.0592 Ha	981740
Lot 18 Deposited Plan 558697	Fee Simple Title	0.0600 Ha	981741
Lot 19 Deposited Plan 558697	Fee Simple Title	0.0600 Ha	981742
Lot 20 Deposited Plan 558697	Fee Simple Title	0.0600 Ha	981743
Lot 21 Deposited Plan 558697	Fee Simple Title	0.0600 Ha	981744

# Title Plan - LT 558697

---

## Created Parcels

Parcels	Parcel Intent	Area	RT Reference
Lot 22 Deposited Plan 558697	Fee Simple Title	0.0600 Ha	981745
Lot 23 Deposited Plan 558697	Fee Simple Title	0.0600 Ha	981746
Lot 24 Deposited Plan 558697	Fee Simple Title	0.0600 Ha	981747
Lot 25 Deposited Plan 558697	Fee Simple Title	0.0672 Ha	981748
Lot 26 Deposited Plan 558697	Fee Simple Title	0.0650 Ha	981749
Lot 27 Deposited Plan 558697	Fee Simple Title	0.0624 Ha	981750
Lot 28 Deposited Plan 558697	Fee Simple Title	0.0608 Ha	981751
Lot 29 Deposited Plan 558697	Fee Simple Title	0.0616 Ha	981752
Lot 30 Deposited Plan 558697	Fee Simple Title	0.0768 Ha	981753
Lot 31 Deposited Plan 558697	Fee Simple Title	0.0607 Ha	981754
Lot 32 Deposited Plan 558697	Fee Simple Title	0.0608 Ha	981755
Lot 33 Deposited Plan 558697	Fee Simple Title	0.0565 Ha	981756
Lot 34 Deposited Plan 558697	Fee Simple Title	0.0555 Ha	981757
Lot 35 Deposited Plan 558697	Fee Simple Title	0.0506 Ha	981758
Lot 36 Deposited Plan 558697	Fee Simple Title	0.0450 Ha	981759
Lot 37 Deposited Plan 558697	Fee Simple Title	0.0600 Ha	981760
Lot 38 Deposited Plan 558697	Fee Simple Title	0.0600 Ha	981761
Lot 39 Deposited Plan 558697	Fee Simple Title	0.0600 Ha	981762
Lot 40 Deposited Plan 558697	Fee Simple Title	0.0450 Ha	981763
Lot 41 Deposited Plan 558697	Fee Simple Title	0.0716 Ha	981764
Lot 42 Deposited Plan 558697	Fee Simple Title	0.0646 Ha	981765
Lot 43 Deposited Plan 558697	Fee Simple Title	0.0450 Ha	981766
Lot 44 Deposited Plan 558697	Fee Simple Title	0.0450 Ha	981767
Lot 45 Deposited Plan 558697	Fee Simple Title	0.0450 Ha	981768
Lot 46 Deposited Plan 558697	Fee Simple Title	0.0450 Ha	981769
Lot 47 Deposited Plan 558697	Fee Simple Title	0.0600 Ha	981770
Lot 48 Deposited Plan 558697	Fee Simple Title	0.0600 Ha	981771
Lot 49 Deposited Plan 558697	Fee Simple Title	0.0550 Ha	981772
Lot 50 Deposited Plan 558697	Fee Simple Title	0.0500 Ha	981773
Lot 51 Deposited Plan 558697	Fee Simple Title	0.0500 Ha	981774
Lot 52 Deposited Plan 558697	Fee Simple Title	0.0500 Ha	981775
Lot 53 Deposited Plan 558697	Fee Simple Title	0.0523 Ha	981776
Lot 54 Deposited Plan 558697	Fee Simple Title	0.0550 Ha	981777
Lot 55 Deposited Plan 558697	Fee Simple Title	0.0600 Ha	981778
Lot 56 Deposited Plan 558697	Fee Simple Title	0.0400 Ha	981779
Lot 57 Deposited Plan 558697	Fee Simple Title	0.0400 Ha	981780
Lot 58 Deposited Plan 558697	Fee Simple Title	0.0400 Ha	981781
Lot 59 Deposited Plan 558697	Fee Simple Title	0.0600 Ha	981782
Lot 60 Deposited Plan 558697	Fee Simple Title	0.0558 Ha	981783
Lot 61 Deposited Plan 558697	Fee Simple Title	0.0450 Ha	981784
Lot 62 Deposited Plan 558697	Fee Simple Title	0.0450 Ha	981785
Lot 63 Deposited Plan 558697	Fee Simple Title	0.0450 Ha	981786
Lot 64 Deposited Plan 558697	Fee Simple Title	0.0451 Ha	981787
Lot 65 Deposited Plan 558697	Fee Simple Title	0.0600 Ha	981788

# Title Plan - LT 558697

---

## Created Parcels

Parcels	Parcel Intent	Area	RT Reference
Lot 66 Deposited Plan 558697	Fee Simple Title	0.0600 Ha	981789
Lot 67 Deposited Plan 558697	Fee Simple Title	0.0600 Ha	981790
Lot 68 Deposited Plan 558697	Fee Simple Title	0.0600 Ha	981791
Lot 69 Deposited Plan 558697	Fee Simple Title	0.0542 Ha	981792
Lot 70 Deposited Plan 558697	Fee Simple Title	0.0450 Ha	981793
Lot 71 Deposited Plan 558697	Fee Simple Title	0.0450 Ha	981794
Lot 72 Deposited Plan 558697	Fee Simple Title	0.0450 Ha	981795
Lot 73 Deposited Plan 558697	Fee Simple Title	0.0450 Ha	981796
Lot 74 Deposited Plan 558697	Fee Simple Title	0.0450 Ha	981797
Lot 75 Deposited Plan 558697	Fee Simple Title	0.0450 Ha	981798
Lot 76 Deposited Plan 558697	Fee Simple Title	0.0600 Ha	981799
Lot 77 Deposited Plan 558697	Fee Simple Title	0.0600 Ha	981800
Lot 78 Deposited Plan 558697	Fee Simple Title	0.0300 Ha	981801
Lot 79 Deposited Plan 558697	Fee Simple Title	0.0300 Ha	981802
Lot 80 Deposited Plan 558697	Fee Simple Title	0.0300 Ha	981803
Lot 81 Deposited Plan 558697	Fee Simple Title	0.0300 Ha	1029022
Lot 82 Deposited Plan 558697	Fee Simple Title	0.0352 Ha	981805
Lot 83 Deposited Plan 558697	Fee Simple Title	0.0600 Ha	981806
Lot 600 Deposited Plan 558697	Fee Simple Title	0.0005 Ha	981807
Lot 601 Deposited Plan 558697	Fee Simple Title	0.0005 Ha	981808
Lot 1000 Deposited Plan 558697	Vesting on Deposit for Road	2.0968 Ha	
Lot 2000 Deposited Plan 558697	Vesting on Deposit for Local Purpose Reserve	0.7148 Ha	981809
Lot 2001 Deposited Plan 558697	Vesting on Deposit for Local Purpose Reserve	0.5458 Ha	981810
Lot 3000 Deposited Plan 558697	Vesting on Deposit for Recreation Reserve (Territorial Authority)	0.2976 Ha	981811
Lot 4000 Deposited Plan 558697	Fee Simple Title	8.2333 Ha	981812
Area A Deposited Plan 558697	Easement		
Area B Deposited Plan 558697	Easement		
Area C Deposited Plan 558697	Easement		
Area D Deposited Plan 558697	Easement		
Area E Deposited Plan 558697	Easement		
<b>Total Area</b>		<b>16.3777 Ha</b>	

**DAVIS OGILVIE & PARTNERS LIMITED**

Level 1, 24 Moorhouse Avenue, Addington  
 PO Box 589, Christchurch 8140  
 0800 999 333 03 366 1653 hello@do.nz  
 Offices in Christchurch, Timaru, Nelson & Greymouth. [www.do.nz](http://www.do.nz)

## DAVIS OGILVIE

ENGINEERS SURVEYORS PLANNERS

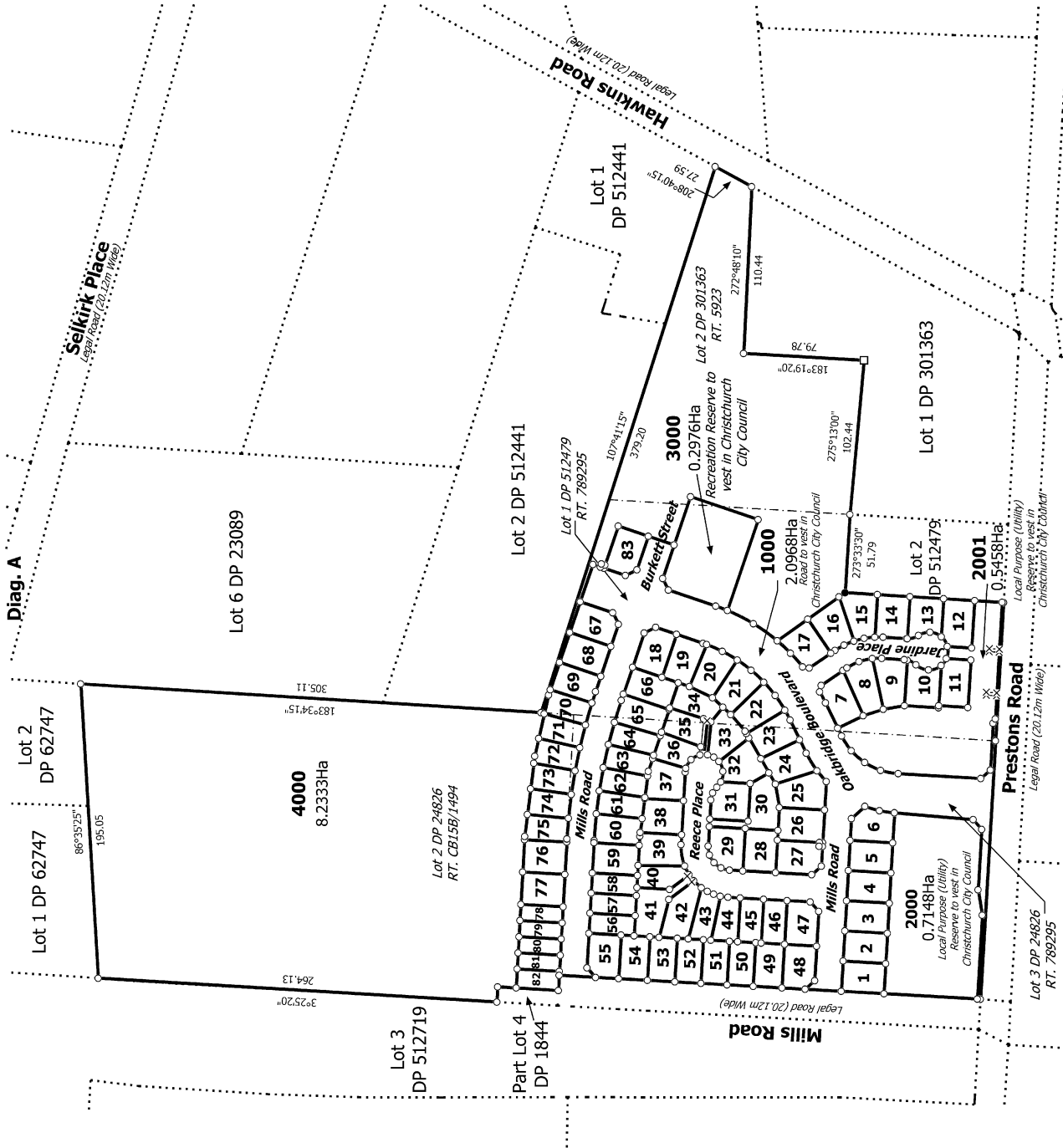
### DP 558697

Memorandum of Easements			
Purpose	Shown	Burdened Land	Benefited Land
Right of Way, Right to Drain Water, Right to Convey Water, Electricity, and Telecommunications	A	Lot 34	Lot 35
	B	Lot 35	Lot 34

Memorandum of Easements in Gross			
Purpose	Shown	Burdened Land	Grantee
Right to Drain Sewage	A	Lot 34	Christchurch City Council
	B	Lot 35	
	C	Lot 41	
Right to Convey Telecommunications	A	Lot 34	Enable Networks Limited
	B	Lot 35	
Right to Convey Electricity	D	Lot 2001	Orion NZ Limited
	E		



Diag. A



T 1/7

Land District: Canterbury

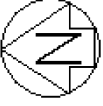
**Digitally Generated Plan**

Generated on: 11/11/2021 08:13am Page 5 of 11

**Lots 1 - 83, 600, 601, 1000, 2000, 3000 and 4000 Being a Subdivision of  
Lots 2 and 3 DP 24826, Lot 2 DP 301363, and Lot 1 DP 512479**

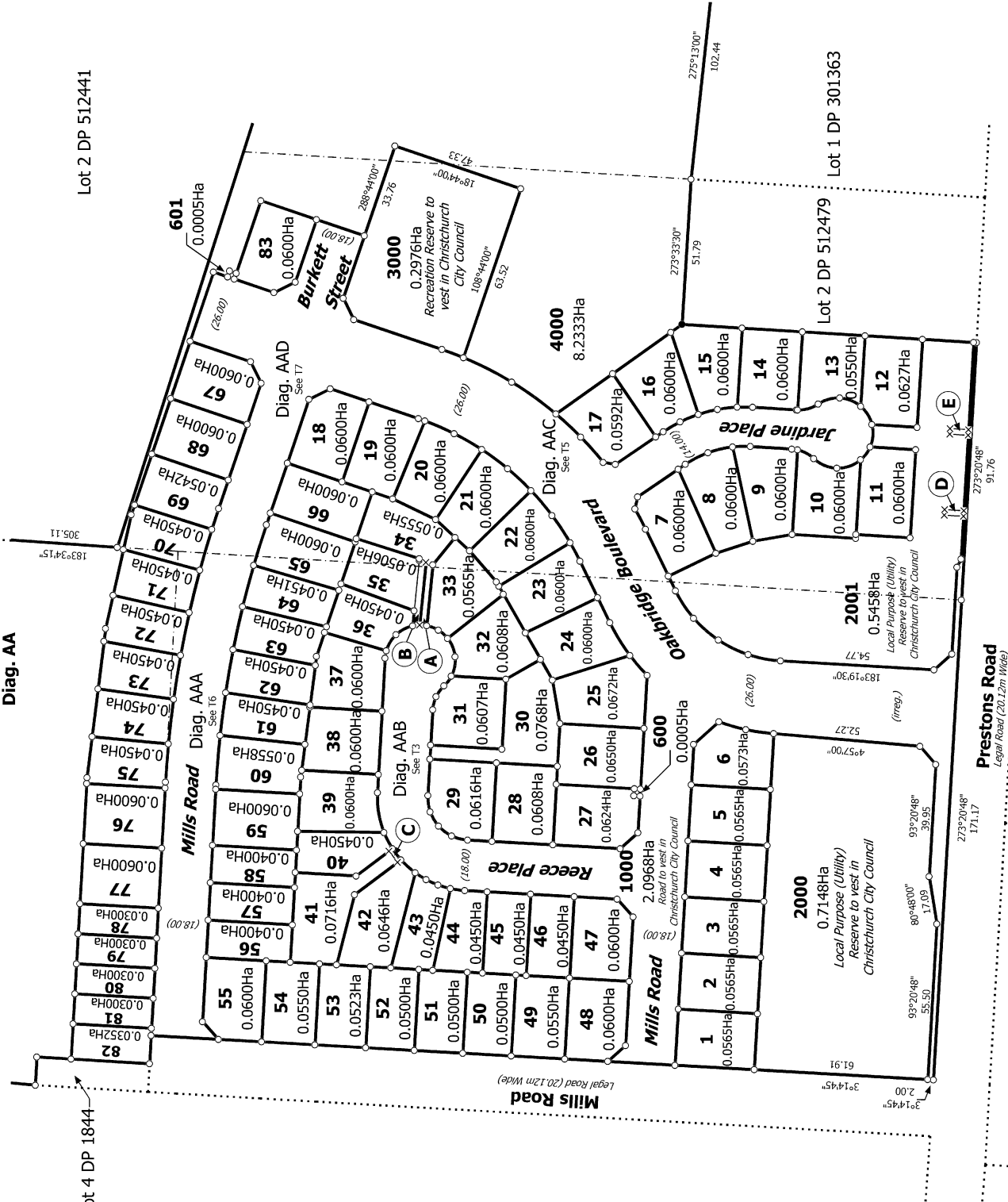
Surveyor: Jared David Wright  
Firm: Davis Ogilvie & Partners Ltd (Christch)

**Title Plan  
LT 558697  
DRAFT**



Lot 2 DP 512441

Part Lot 4 DP 1844



Lot 2 DP 512479

Lot 1 DP 301363

T 217

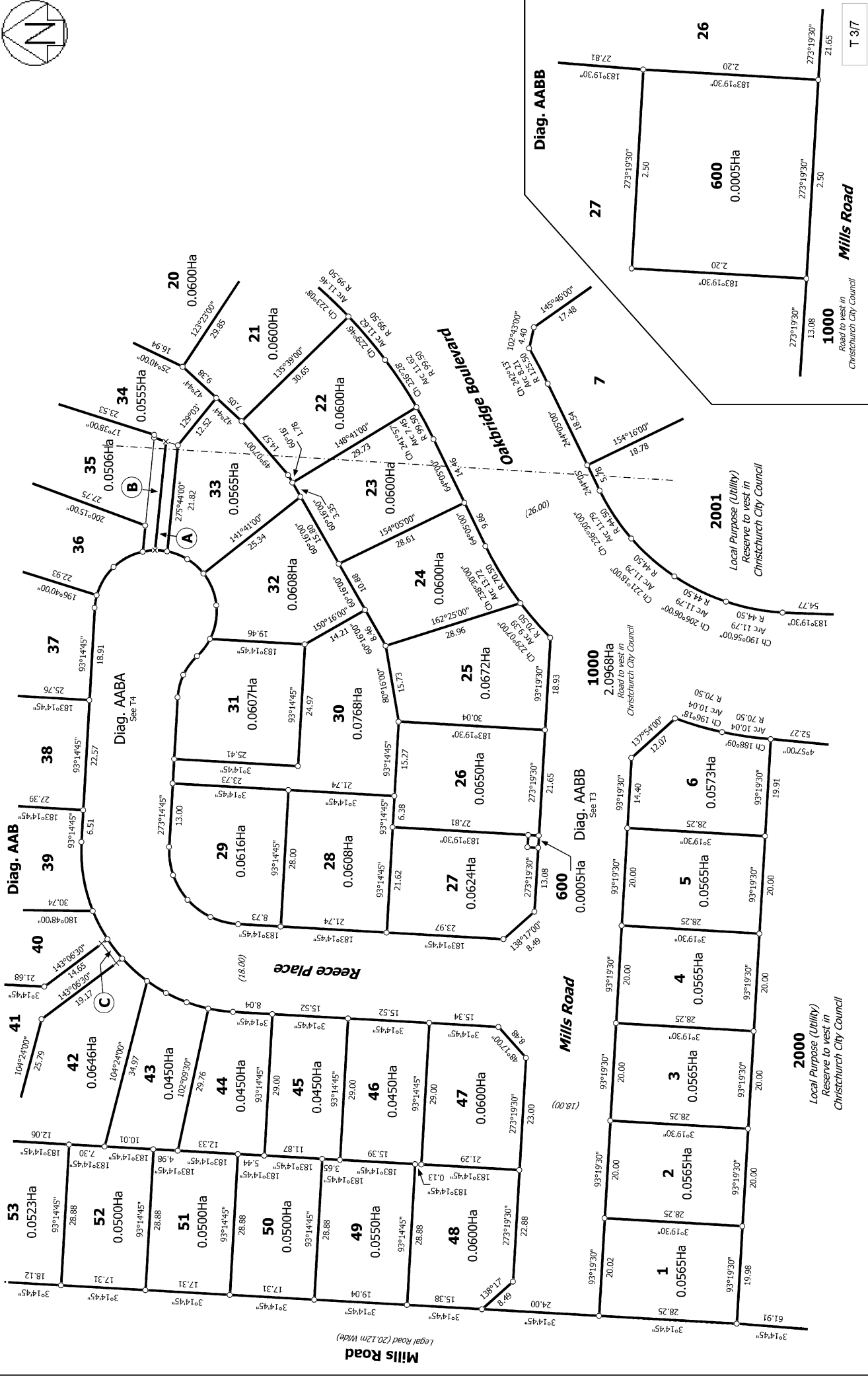
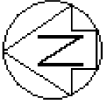
Land District: Canterbury

**Digitally Generated Plan**  
Generated on: 11/11/2021 08:13am Page 6 of 11

**Lots 1 - 83, 600, 601, 1000, 2000, 3000 and 4000 Being a Subdivision of  
Lots 2 and 3 DP 24826, Lot 2 DP 301363, and Lot 1 DP 512479**

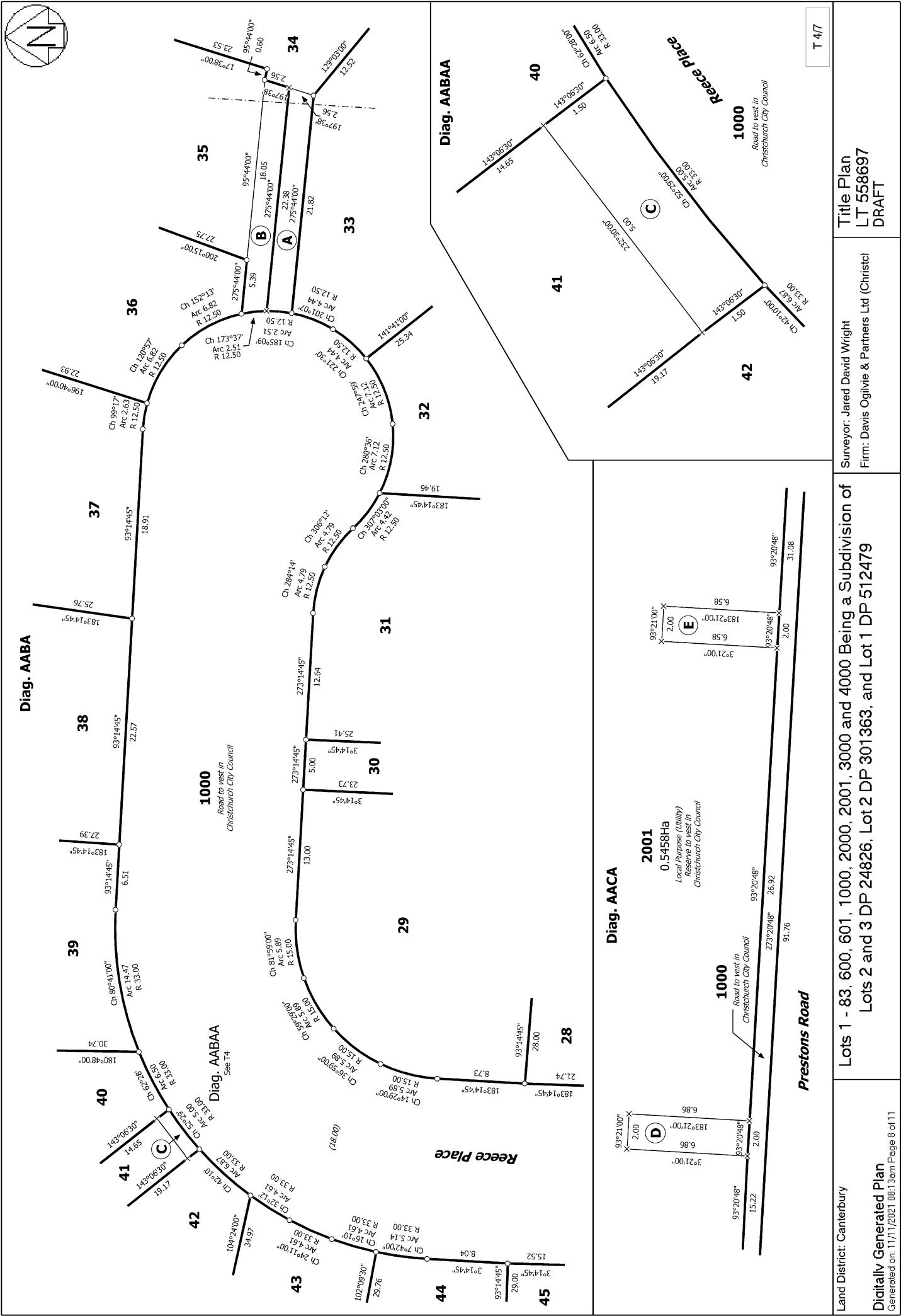
Surveyor: Jared David Wright  
Firm: Davis Ogilvie & Partners Ltd (Christch)

**Title Plan  
LT 558697  
DRAFT**



Land District: Canterbury	Surveyor: Jared David Wright	Title Plan LT 558697 DRAFT
<b>Digitally Generated Plan</b> Generated on: 11/11/2021 06:13:01 Page 7 of 11	Firm: Davis Ogilvie & Partners Ltd (Christchurch City Council)	
<b>Lots 1 - 83, 600, 601, 1000, 2000, 2001, 3000 and 4000 Being a Subdivision of Lots 2 and 3 DP 24826, Lot 2 DP 301363, and Lot 1 DP 512479</b>		

T 3/7



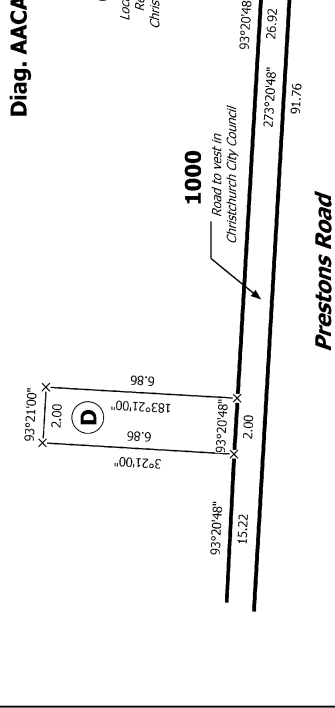
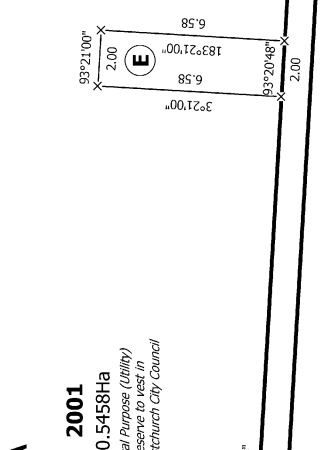
T 4/7

**Title Plan**  
 LT 558697  
 DRAFT

Surveyor: Jared David Wright  
 Firm: Davis Ogilvie & Partners Ltd (Christchurch City Council)

**Lots 1 - 83, 600, 601, 1000, 2000, 2001, 3000 and 4000 Being a Subdivision of Lots 2 and 3 DP 24826, Lot 2 DP 301363, and Lot 1 DP 512479**

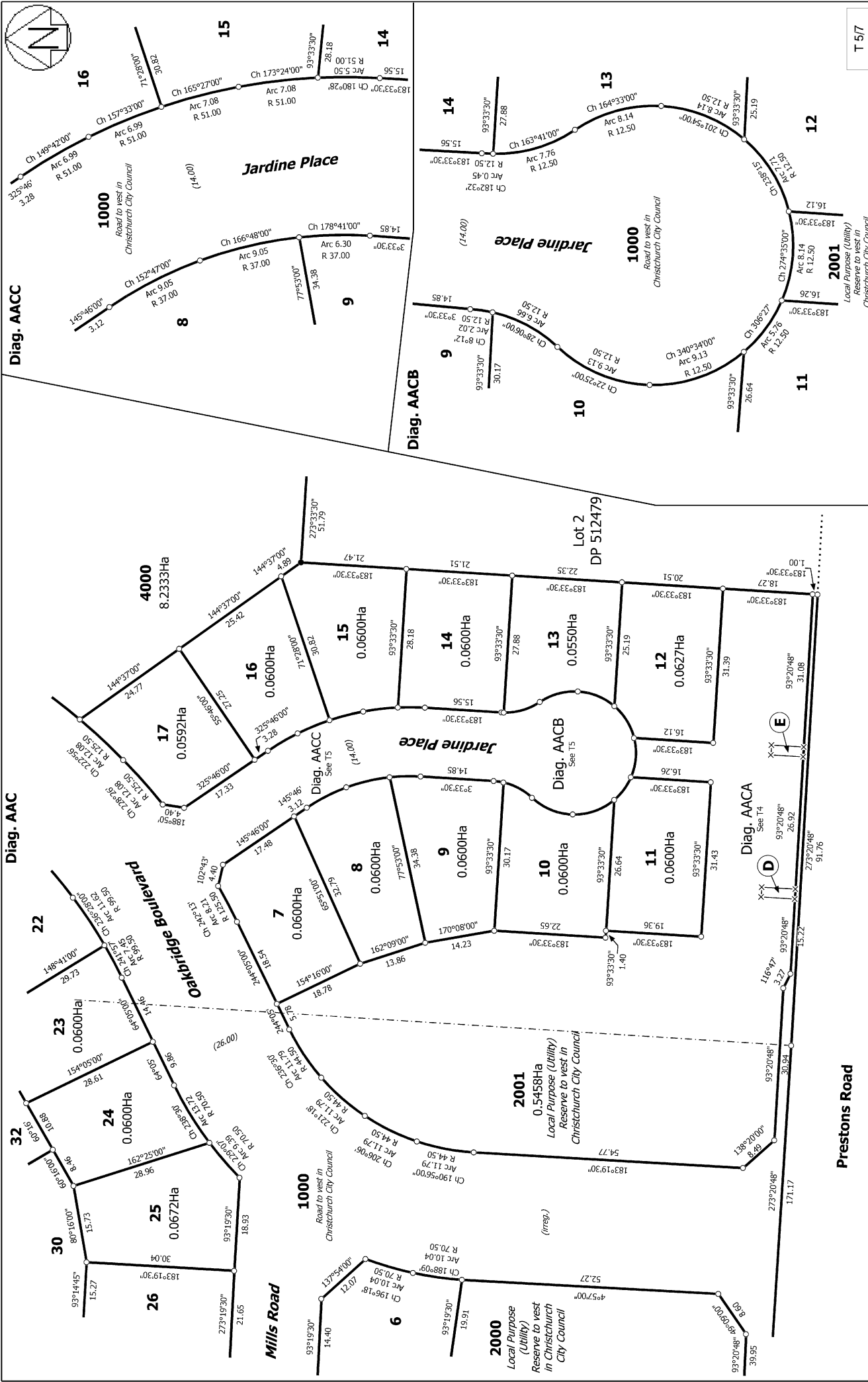
Land District: Canterbury  
**Digitally Generated Plan**  
 Generated on: 11/11/2021 08:13am Page 8 of 11



**Diag. AACB**  
 2001  
 0.5458Ha  
 Local Purpose (Utility)  
 Reserve to vest in  
 Christchurch City Council

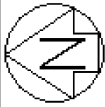
**Diag. AACB**  
 2001  
 0.5458Ha  
 Local Purpose (Utility)  
 Reserve to vest in  
 Christchurch City Council





<p>Land District: Canterbury</p> <p><b>Digitally Generated Plan</b></p> <p>Generated on: 11/11/2021 06:13am Page 9 of 11</p>	<p>Lots 1 - 83, 600, 601, 1000, 2000, 3000 and 4000 Being a Subdivision of Lots 2 and 3 DP 24826, Lot 2 DP 301363, and Lot 1 DP 512479</p>	<p>Surveyor: Jared David Wright</p> <p>Firm: Davis Ogilvie &amp; Partners Ltd (Christchurch)</p>	<p><b>Title Plan</b></p> <p>LT 558697</p> <p>DRAFT</p>
--	--	--	--

T 5/7



Diag. AAA



T 617

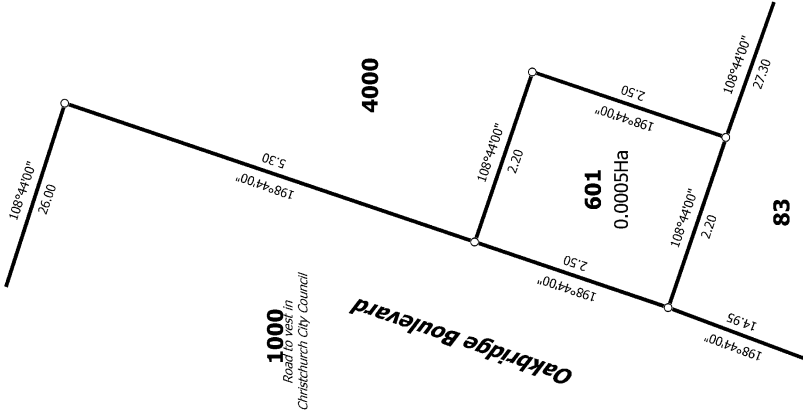
**Lots 1 - 83, 600, 601, 1000, 2000, 2001, 3000 and 4000 Being a Subdivision of  
 Lots 2 and 3 DP 24826, Lot 2 DP 301363, and Lot 1 DP 512479**

Surveyor: Jared David Wright  
 Firm: Davis Ogilvie & Partners Ltd (Christci)

Title Plan  
 LT 558697  
 DRAFT



Diag. AADA



T 717

Title Plan  
LT 558697  
DRAFT

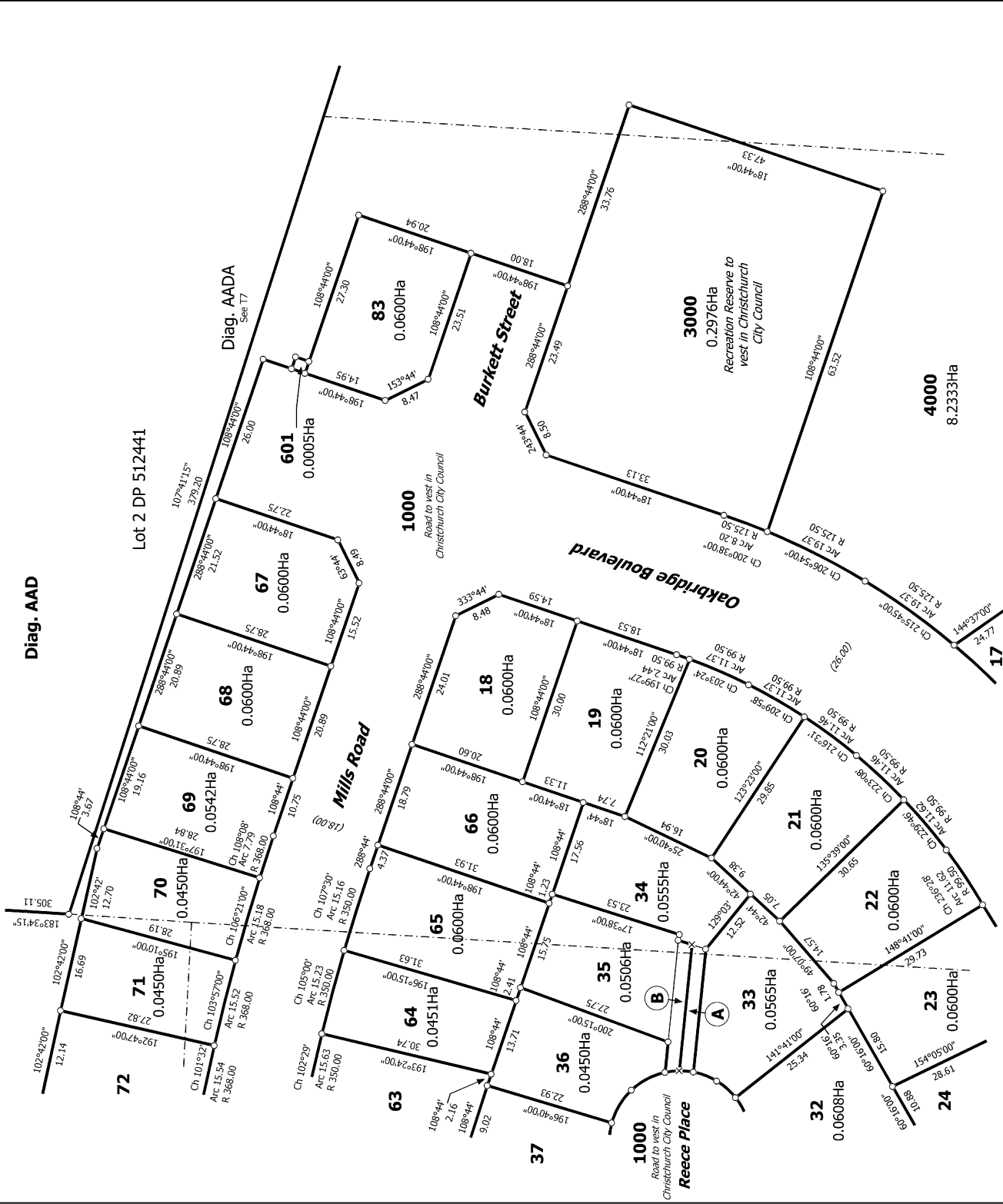
Surveyor: Jared David Wright  
Firm: Davis Ogilvie & Partners Ltd (Christchurch)

Lots 1 - 83, 600, 601, 1000, 2000, 2001, 3000 and 4000 Being a Subdivision of  
Lots 2 and 3 DP 24826, Lot 2 DP 301363, and Lot 1 DP 512479

Land District: Canterbury

Digitally Generated Plan

Generated on: 11/11/2021 06:13:01; Page 11 of 11



Diag. AAD

Lot 2 DP 512441

Diag. AADA  
See T7

17